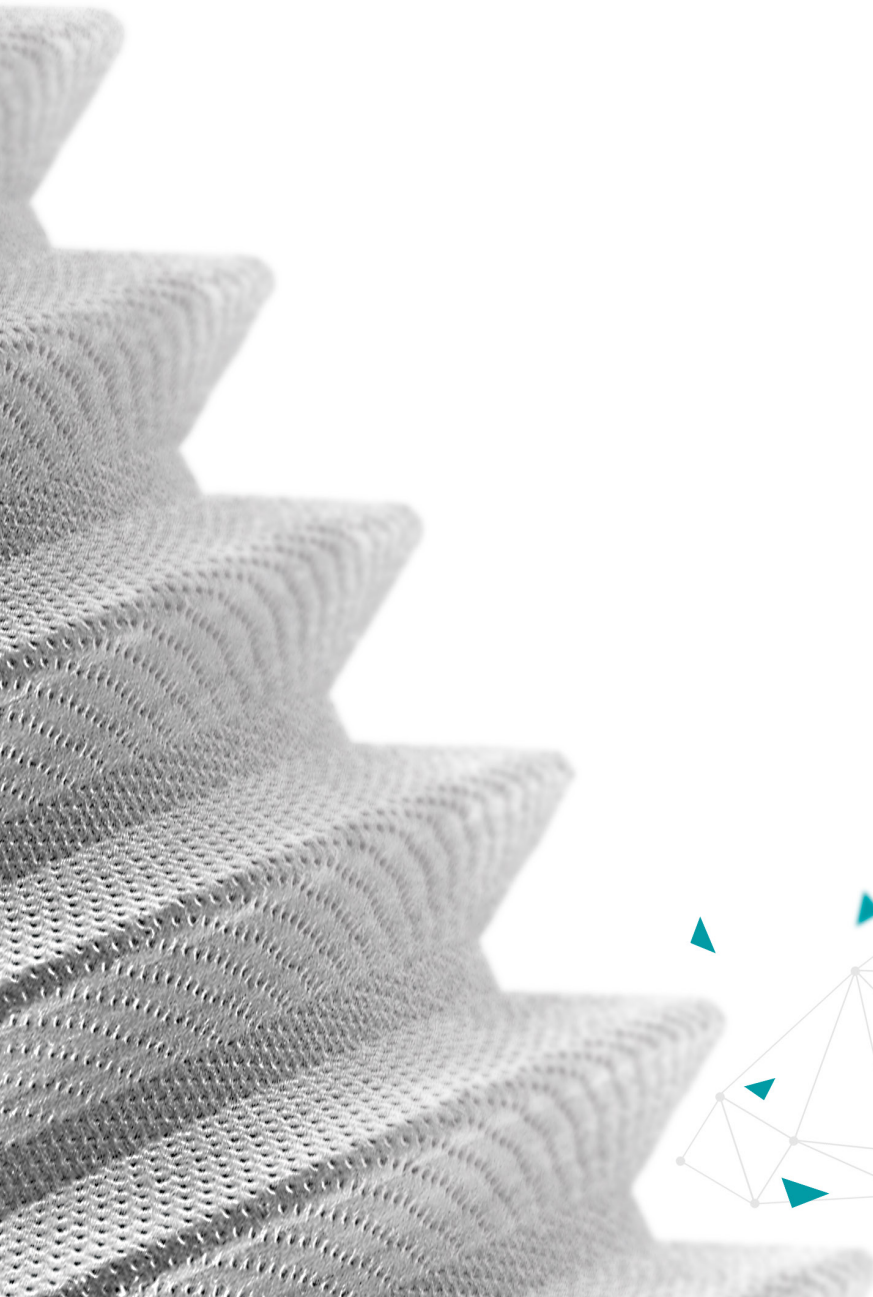




synthegra

The surface which fights peri-implantitis



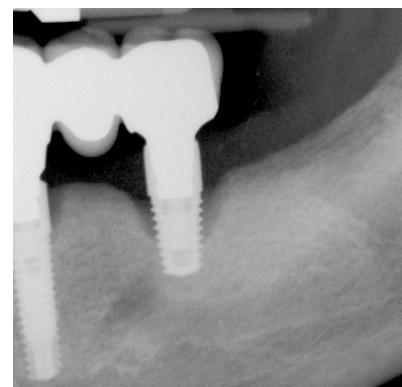
Fighting peri-implantitis for long term osseointegration: the new challenge

At the end of the Nineties, research for better performance led to the creation of new implant surfaces, characterized by a certain level of roughness in order to further stimulate osseointegration^{1,2,3}.

In many cases the effects that surface roughness can have on bacterial adhesion and the relative consequences to **long term implant success** were ignored.

Now, some years on, more and more cases which had used **rough implants** need **reintervention**, generating dissatisfaction both for the dentist as well as for the patient, a loss of time and an increase in costs.

The **new challenge** for an implant surface today is to answer **two needs** at the same time: **reducing risks of infection** which may prejudice implant survival and the **promotion of long term osseointegration**.

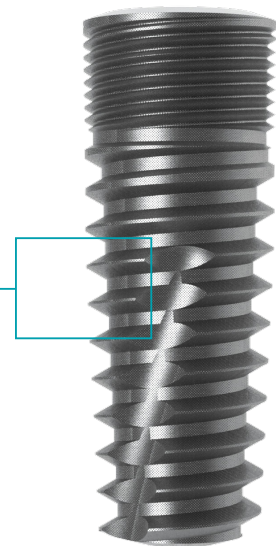
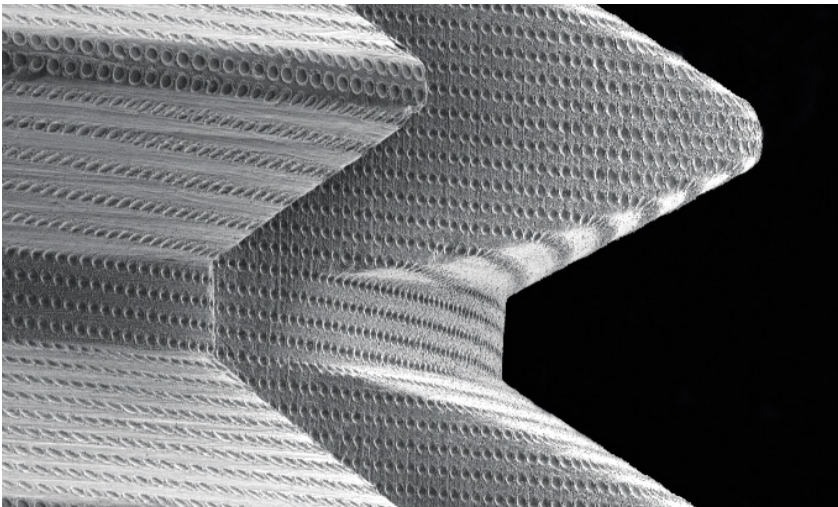


Various studies state that the peri implantitis problem concerns around 20% of patients and 10% of implants^{4,5,6}, percentages which seem destined to increase over the next few years.

Enemies of bacterial adhesion, friends of osseointegration

Geass research has developed and patented⁷ **Synthegra**, the laser treated surface which **acts in two ways**: it fights periimplantitis and promotes osseointegration for long term success. In fact, Synthegra:

- 1 is a smooth surface, able to obstacle bacterial adhesion
- 2 acts like a rough surface promoting osseointegration



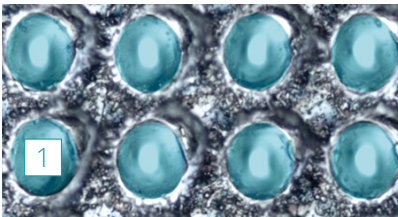
Synthegra technology has been patented to treat the entire implant body, regardless of the shape, diameter and length of the way and omny implants, the implant-prosthetic systems designed by Geass.

Synthegra obstacles bacterial adhesion, being a smooth surface

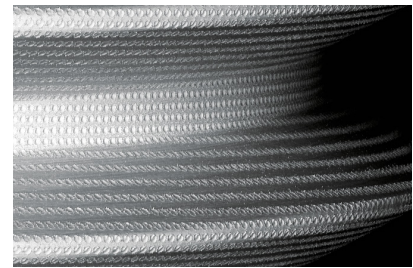
The use of laser technology makes it possible to create a geometrically controlled surface, characterized by thousands of **niches** each one the same as the others in terms of **shape, dimension** and **distribution**.

The nature of the niches and the inter spacing is **extremely smooth**, a characteristic which **obstacles bacterial adhesion**.

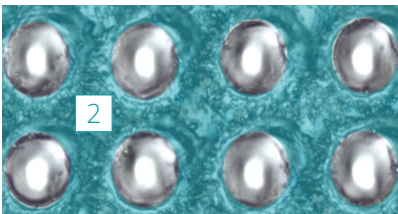
1 Internal niches



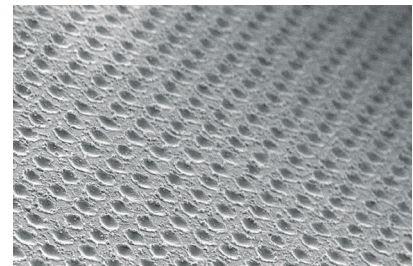
Thanks to the laser effect, the surface of the **niches** (indicated part) is very smooth, with a Ra value equal to **0,1 μm** .



2 External niches



Even **outside** the niches (indicated part), the surface is smooth, with a Ra value equal to **0,4 μm** .



According to the classification of the surfaces, based on the degree of roughness, the Ra values of Synthegra inside and outside the niches correspond to those of the smoothest surfaces.

Synthegra has resulted in being smoother than the machined surface, recognized by clinical experience as the standard reference to reduce bacterial adhesion and the risk of periimplant infections⁹.

Roughness (Ra)	Definition
$\leq 0,4 \mu\text{m}$	smooth
0,5 - 1,0 μm	machined
1,0 - 2,0 μm	moderately rough
$> 2,0 \mu\text{m}$	rough

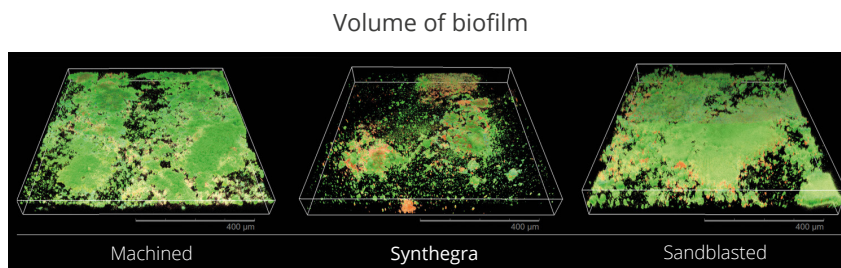
Classification of the surfaces according to Albrektsson and Wennerberg⁹.

Studies that confirm the reduction of biofilm formation

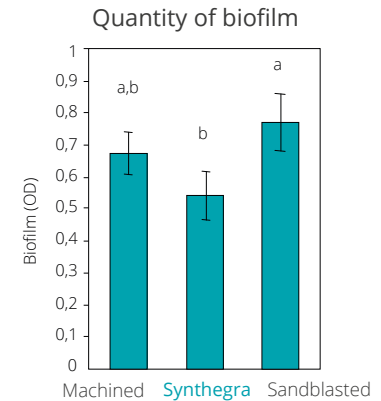
To evaluate the biofilm formation on Synthegra, an *in vitro* study and an *in situ* study were conducted in collaboration with the I.R.C.C.S. Galeazzi in Milan¹⁰.

In vitro study

An oral bacterial culture, coming from a saliva inoculum, has been set up on titanium disks inside a bioreactor and incubated for 48 hours.



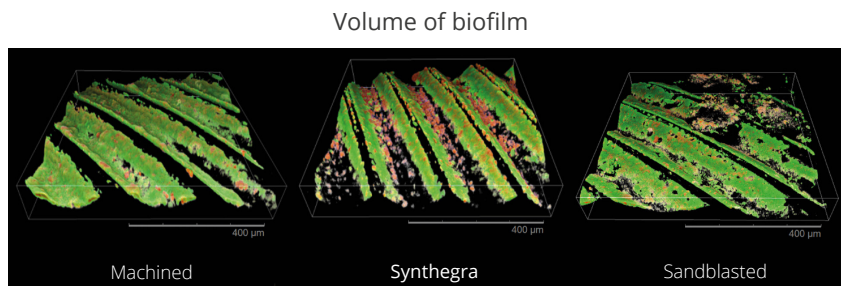
CLSM reconstructions of *in vitro* biofilm formation on different surfaces
In all reconstructions, viable microorganisms are stained in green, while dead microorganisms are stained in red.



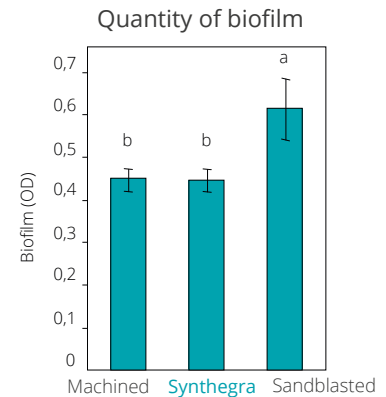
MTT viability biochemical assay, comparing biofilm levels among the machined, Synthegra and sandblasted surfaces.

In situ study

The dental implants have been fixed on intraoral trays, then inserted in the oral cavity and maintained for 48 hours.



CLSM reconstructions of *in situ* biofilm formation on machined (A), sandblasted (B) and Synthegra (C) surfaces. In all reconstructions, viable microorganisms are stained in green, while dead microorganisms are stained in red.



MTT viability biochemical assay, comparing biofilm levels among the machined, Synthegra and sandblasted surfaces.

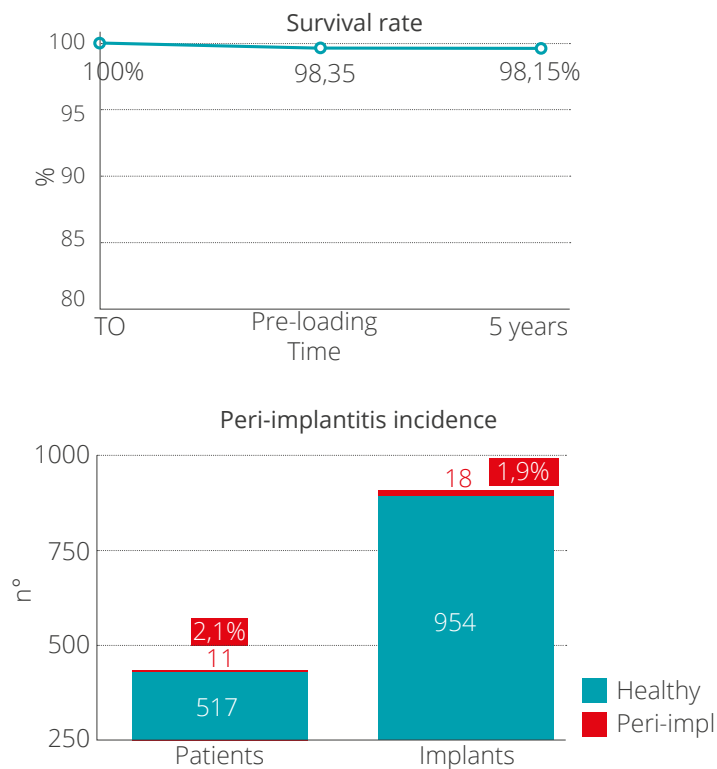
Results

In both studies, the volume and quantity of the viable biofilm on Synthegra surface are significantly lower than the sandblasted surface and comparable to the machined surface.

Retrospective Clinical Study: evaluation of the survival rate and incidence of peri-implantitis

Geass is collecting clinical data in a retrospective study, evaluating the behaviour of way implants with the Synthegra surface in the medium term.

The preliminary data confirm a high percentage of success and a low incidence of peri-implantitis*.



Materials and methods

The study involved **4 dental clinics** with over **1000 way Milano implants** inserted on **500 patients**.

The patients included were treated consecutively from 2008 to 2013.

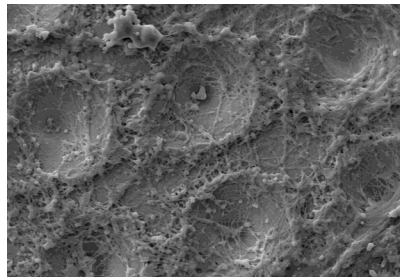
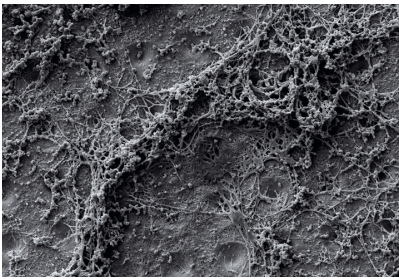
All the edentulia (single, partial and total) and all the prosthetic rehabilitation techniques with prosthetic loading at at least 12 months were considered.

Thanks to its extremely smooth nature, Synthegra is less attackable by bacteria and so reduces the risk of infection which may produce peri-implantitis.

Synthegra behaves like a rough surface: it promotes osseointegration

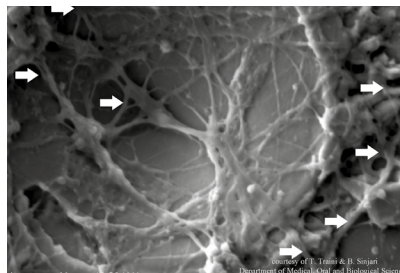
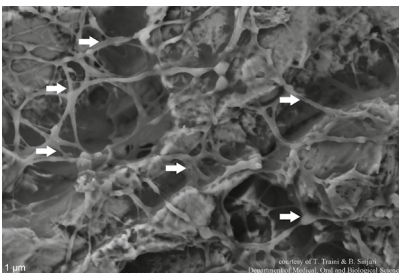
Synthegra **stimulates the formation** of a coagulation of the extended **fibrin**¹¹, which attracts the cells involved in bone healing and allows them to reach the surface of the implant.

The topographical distribution and the dimensions of the niches favour their housing and the activity of the osteoblasts determine effective osseointegration^{12, 13}.



SEM images in which it is possible to observe the formation of the fibrin on Synthegra and on the surface of the niches (University of Chieti – Pescara).

On the traditional rough surface, the **fibrin filaments** are able to adhere nearly exclusively to the peaks of the surface forming bridges between them. However, on Synthegra the fibrin manages to form well-developed lattices **in the valleys too**, favouring housing of the **osteogenic cells** directly on the implant surface.



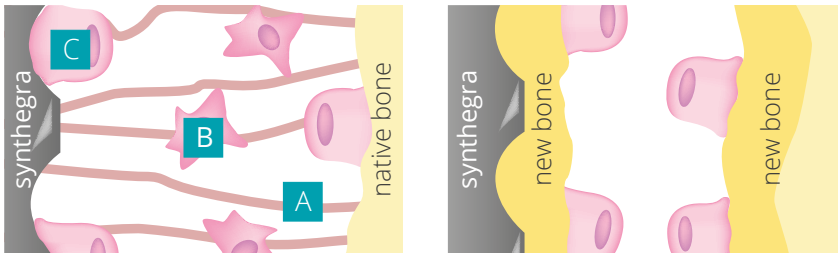
Sandblasted machined

Synthegra

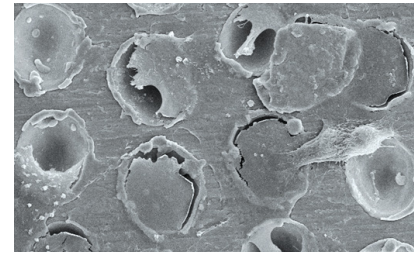
The SEM images show how the filaments of fibrin adhere in different ways to the Synthegra surface and to the sand-blasted surface (University of Chieti – Pescara).

Greater contact osteogenesis

Thanks to the elevated fibrin adhesion, **Synthegra** attracts a larger number of osteogenic cells and allows them to house themselves stably on the implant surface. This process activates the formation of bone directly in contact with the implant, determining a faster and more favorable osseointegration.



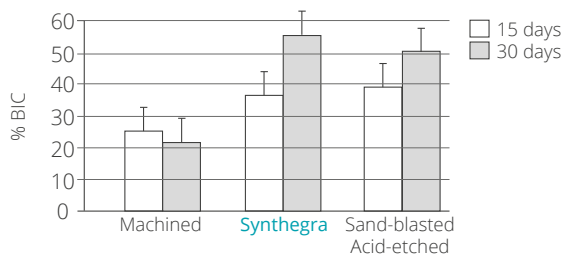
The pre-osteoblasts migrate along the fibrin filaments and reach Synthegra, where they begin to deposit new bone (in dark yellow). The formation of new bone originates both from native bone as well as from Synthegra. A. fibrin - B. pre-osteoblasts - C. osteoblasts



The SEM image shows how the osteoblasts found ideal housing in the niches which characterise Synthegra (image provided by certified laboratory analyses).

Rapid osseointegration

Even though it is a smooth surface, able to reduce bacterial adhesion, **Synthegra** favours osseointegration with its strong contact osteogenesis, as demonstrated by an in vivo study on sheep.



Implants with machined, Synthegra and sand-blasted-acid etched surfaces were inserted into spongy bone of the iliac crest and were then removed after 15 and 30 days (University of Chieti-Pescara).

Results

From the study, it results that already at 15 days the percentage di BIC (Bone Implant Contact) for **Synthegra** is greater than that of the machined surface and can be compared to the better performing rough surfaces.

Synthegra, as well as guaranteeing a lesser risk for bacterial adhesion, ensures **excellent osseointegration** in a short time¹⁴⁻¹⁹.

Synthegra doubly unique, doubly effective

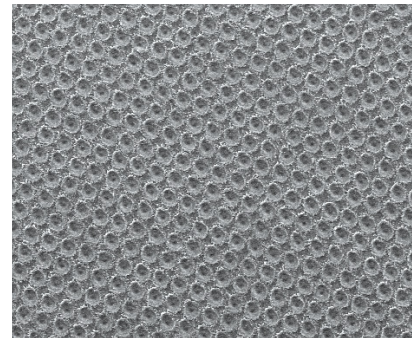
Synthegra is the only implant surface treated by laser which can boast:

1

- an extremely smooth nature
- lesser bacterial adhesion



less risk of peri-implant infection

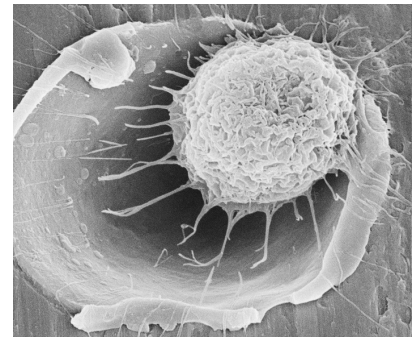


2

- greater adhesion of the fibrin
- greater contact osteogenesis



perfect osseointegration



From Italian research performed by Geass, Synthegra is the safe answer and at the forefront against peri-implantitis, rising up to the new challenge of long term osseointegration.

Bibliography

- ¹Wennerberg A, Albrektsson T. Effects of titanium surface topography on bone integration: a systematic review. *Clin Oral Implants Res.* 2009 Sep;20 Suppl 4:172-84.
- ²Le Guéhennec L, Soueidan A, Layrolle P, Amouriq Y. Surface treatments of titanium dental implants for rapid osseointegration. *Dent Mater.* 2007 Jul;23(7):844-54.
- ³Shalabi MM, Gortemaker A, Van't Hof MA, Jansen JA, Creugers NH. Implant surface roughness and bone healing: a systematic review. *J Dent Res.* 2006 Jun;85(6):496-500.
- ⁴Mombelli A, Müller N, Cionca N. The epidemiology of peri-implantitis. *Clin Oral Implants Res.* 2012 Oct;23 Suppl 6:67-76.
- ⁵Atieh MA, Alsabeeha NH, Faggian CM Jr, Duncan WJ. The frequency of peri-implant diseases: a systematic review and meta-analysis. *J Periodontol.* 2013 Nov; 84(11):1586-98.
- ⁶Derks J, Tomasi C. Peri-implant health and disease. A systematic review of current epidemiology. *J Clin Periodontol.* 2015;42 Suppl 16:S158-S171. doi:10.1111/jcpe.12334
- ⁷Brevetto nr. 0001373025
- ⁸Albrektsson T, Wennerberg A. Oral implant surfaces: Part 1--review focusing on topographic and chemical properties of different surfaces and in vivo responses to them. *Int J Prosthodont.* 2004 Sep-Oct;17(5):536-43.
- ⁹Astrand P, Engquist B, Anzén B, Bergendal T, Hallman M, Karlsson U, Kvint S, Lysell L, Rundcranz T. A three-year follow-up report of a comparative study of ITI Dental Implants and Brånemark System implants in the treatment of the partially edentulous maxilla. *Clin Implant Dent Relat Res.* 2004;6(3):130-41.
- ¹⁰Ionescu AC, Brambilla E, Azzola F, Ottobelli M, Pellegrini G, Francetti LA. Laser microtextured titanium implant surfaces reduce in vitro and in situ oral biofilm formation. *PLoS One.* 2018;13(9):e0202262. Published 2018 Sep 7. doi:10.1371/journal.pone.0202262
- ¹¹Sinjari B, Traini T, Caputi S, Mortellaro C, Scarano A. Evaluation of fibrin clot attachment on titanium laser conditioned surface using scanning electron microscopy. *Journal of Craniofacial Surgery,* 2018 Nov;29(8):2277-2281.
- ¹²Cei S, Legitimo A, Barachini S, Consolini R, Sammartino G, Mattii L, Gabriele M, Graziani F. Effect of Laser Micromachining of Titanium on Viability and Responsiveness of Osteoblast-Like Cells. *Implant Dent.* 2011 Aug;20(4):285-91.
- ¹³Berardi D, De Benedittis S, Polimeni A, Malagola C, Cassinelli C, Perfetti G. In vitro evaluation of the efficacy of a new laser surface implant: cellular adhesion and alkaline phosphatase production tests. *Int. J. Immunop. Pharm.* 2009; 1;125-131.
- ¹⁴Lepore S, Milillo L, Trotta T, Castellani S, Porro C, Panaro MA, Santarelli A, Bambini F, Lo Muzio L, Conese M, Maffione AB. Adhesion and growth of osteoblast-like cells on laser-engineered porous titanium surface- Expression and localization of N-cadherin and β -catenin. *J Biol Regul Homeost Agents.* 2013 Apr-Jun;27(2):531-41.
- ¹⁵Leonida A, Redondo J, Todeschini G, Rossi G, Paiusco A, Baldoni M. Valutazione del grado di differenziamento in senso osteoblastico delle cellule staminali mesenchimali umane su una superficie in titanio modificata al laser. *Quintessenza Internazionale & International Journal of Oral & Maxillofacial Implants,* 2013;29:1bis;23-28.
- ¹⁶Sinjari B, Guarnieri S, Diomede F, Merciaro I, Mariggio MA, Caputi S, Trubiani O. Influence of titanium laser surface geometry on proliferation and on morphological features of human mandibular primary osteoblasts. *J Biol Regul Homeost Agents.* 2012 Jul-Sep;26(3):505-13.
- ¹⁷Berardi D, De Benedittis S, Scoccia A, Perfetti G, Conti P. New laser-treated implant surfaces: A histologic and histomorphometric pilot study in rabbits. *Clin Invest Med.* 2011 Aug 1;34(4):E202.
- ¹⁸Trisi P, Berardini M, Colagiovanni M, Berardi D, Perfetti G. Laser-treated titanium implants: an in vivo histomorphometric and biomechanical analysis. *Implant Dentistry,* 2016 Oct;25(5):575-80.
- ¹⁹De Tullio I, Berardini M, Di Iorio D, Perfetti F, Perfetti G. Comparative evaluation among laser treated, machined and sandblasted/acid etched implant surfaces. An in vivo histologic analysis on sheep. *International Journal of Implant Dentistry* accepted dic 2019.

Synthegra and the implants Geass

Synthegra is the laser implant treatment applied by Geass on its prosthetic implant systems.

way

Five types of implants, specific for every kind of rehabilitation, connected by the same surgical protocol. Way is the perfect solution to answer all the professional's needs



way Mix
esthetic area



way Extra
post-extraction



way Slim
Ø 3 mm



way Rock
distal area



way Short
5 and 6.5 mm

omny

The implant system which reconciles the clinical needs and the limited economic base of the patients, thanks to simple, complete, innovative and cost-effective solutions.



omny
internal hexagon



omny Classics
external hexagon

Geass srl

Via Madonna della Salute, 23
33050 Pozzuolo del Friuli (UD) - I
tel +39 0432 669191 info@geass.it
www.geass.it

