

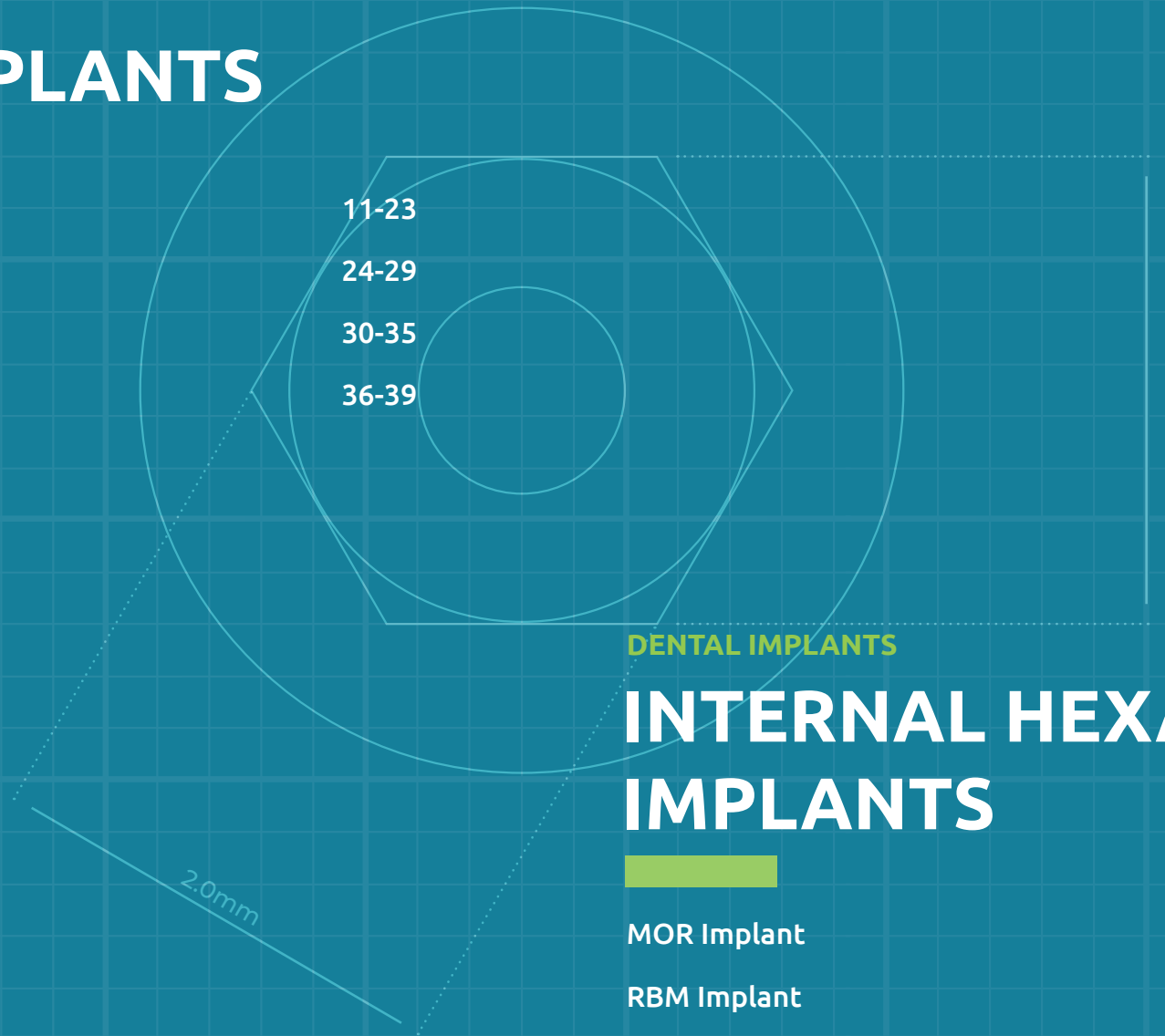
DENTAL IMPLANTS

Internal Hexagon Implants

Conical Connection Implants

One-Piece Implants

Orthodontic Mini-Screws



DENTAL IMPLANTS

INTERNAL HEXAGON IMPLANTS

MOR Implant

12-13

RBM Implant

14-15

ABA Implant

16-17

CFI Implant

18-19

MAX Implant

20-21

ZYG Implant

22-23



Scan the QR Code to visit GDT Implants website

MOR - Spiral Implant

MOR Implant is a highly compatible implant solution based on the popular **Internal Hexagon connection with SLA - Sand blast, double etched in acid surface treatment.** With its tapered body and exceptional self-drilling capabilities, it establishes a strong and stable connection suitable for immediate loading. MOR Implant adapts to various bone types and augmentation procedures, making it an ideal choice for a wide range of patients.

CONNECTION: Internal Hexagon 2.42mm.
Slim Platform - Internal Hexagon 2.0mm.

MATERIAL: Ti-6AL-4VELI (Titanium grade 5).

SURFACE TREATMENT: SLA - Sand blast, double etched in acid.

STERILIZATION: Gamma irradiation.

SPECIFICATIONS:



CONNECTION AND PLATFORM SWITCHING

- Internal Hexagon - One universal platform for all diameters.
- Minimizes crestal bone loss, promotes bone and soft tissue growth, improves natural aesthetics.



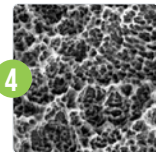
TAPERED BODY WITH SPIRAL DESIGN

- Optimal soft tissue support.
- Excellent primary stability.
- Improves bone condensation during insertion.



AGGRESSIVE APICAL THREADS

- Allow for more aggressive bone engagement for indications such as immediate extraction sockets, poor bone quality, and immediate loading.



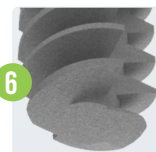
SLA - SANDBLAST, LARGE GRIT, ACID-ETCH

- Enhances dental implant stability and osseointegration, improving long-term success rates.



SELF TAPPING SYSTEM

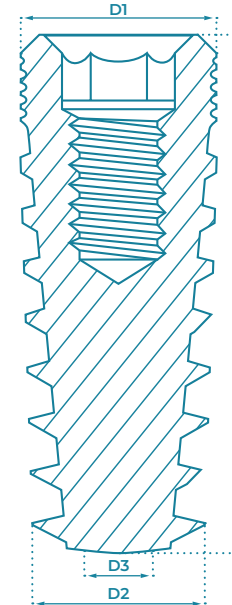
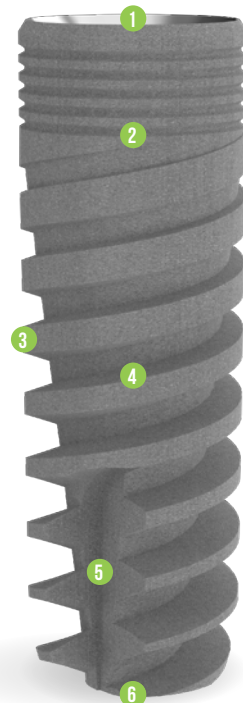
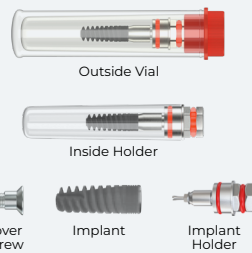
- Self-tapping.
- Self-drilling.
- Increases load distribution.



ROUND APEX

- Enhances implant stability.
- Protects sinus from perforation, and minimizes the risk of anatomical structure damage.

PACKAGE CONTENT



D1 (mm)	D2 (mm)	D3 (mm)	L (mm)	CODE
Ø3.0	Ø2.75	Ø2.3	10	S3010
			11.5	S3011
			13	S3013
			16	S3016
Ø3.5	Ø3.1	Ø2.4	8	M3508
			10	M3510
			11.5	M3511
			13	M3513
Ø3.75	Ø3.75	Ø3.1	16	M3516
			8	M3708
			10	M3710
			11.5	M3711
Ø4.2	Ø3.95	Ø3.2	13	M3713
			16	M3716
			6	M4206
			8	M4208
Ø5.0	Ø4.6	Ø4.1	10	M4210
			11.5	M4211
			13	M4213
			16	M4216
Ø6.0	Ø5.6	Ø5.1	6	M5006
			8	M5008
			10	M5010
			11.5	M5011
			13	M5013
			16	M5016
			6	M6006
			8	M6008
			10	M6010
			11.5	M6011
			13	M6013

Drilling Protocol	Marking Drill	Drill Bits												
		Ø2.0	Ø2.5	Ø2.8	Ø3.2	Ø2.5x3.75	Ø2.7x4.0	Ø3.65	Countersink Ø3.75x4.2	Ø4.2	Ø4.5	Ø5.2	Countersink Ø5.0x6.0	
Ø3.0	Soft Bone	●	○	○	○	○	○	○	○	○	○	○	○	○
	Hard Bone	●	○	○	○	○	○	○	○	○	○	○	○	○
Ø3.5	Soft Bone	●	○	○	○	○	○	○	○	○	○	○	○	○
	Hard Bone	●	○	○	○	○	○	○	○	○	○	○	○	○
Ø3.75	Soft Bone	●	○	○	○	○	○	○	○	○	○	○	○	○
	Hard Bone	●	○	○	○	○	○	○	○	○	○	○	○	○
Ø4.2	Soft Bone	●	○	○	○	○	○	○	○	○	○	○	○	○
	Hard Bone	●	○	○	○	○	○	○	○	○	○	○	○	○
Ø5.0	Soft Bone	●	○	○	○	○	○	○	○	○	○	○	○	○
	Hard Bone	●	○	○	○	○	○	○	○	○	○	○	○	○
Ø6.0	Soft Bone	●	○	○	○	○	○	○	○	○	○	○	○	○
	Hard Bone	●	○	○	○	○	○	○	○	○	○	○	○	○

• The suggested drilling protocol is only a recommendation and should not replace the doctor's opinion.



RBM - Spiral Implant

RBM Implant is a highly compatible implant solution based on the popular **Internal Hexagon connection** with **RBM - Resorbable Blast Media surface treatment**. With its tapered body and exceptional self-drilling capabilities, it establishes a strong and stable connection suitable for immediate loading. MOR Implant adapts to various bone types and augmentation procedures, making it an ideal choice for a wide range of patients.

CONNECTION: Internal Hexagon 2.42mm.
Slim Platform (Ø3.0mm) Internal Hexagon 2.0mm.

MATERIAL: Ti-6AL-4VELI (Titanium grade 5).

SURFACE TREATMENT: RBM - Resorbable Blast Media.

STERILIZATION: Gamma irradiation.

SPECIFICATIONS:



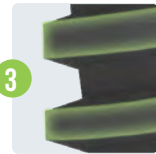
CONNECTION AND PLATFORM SWITCHING

- Internal Hexagon - One universal platform for all diameters.
- Minimizes crestal bone loss, promotes bone and soft tissue growth, improves natural aesthetics.



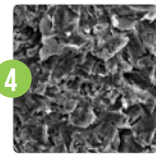
TAPERED BODY WITH SPIRAL DESIGN

- Optimal soft tissue support.
- Excellent primary stability.
- Improves bone condensation during insertion.



AGGRESSIVE APICAL THREADS

- Allow for more aggressive bone engagement for indications such as immediate extraction sockets, poor bone quality, and immediate loading.



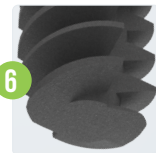
RBM - RESORBABLE BLAST MEDIA

- Promotes faster and stronger bone integration, enhancing the stability of dental implants.



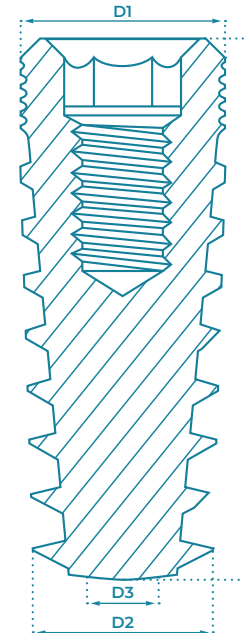
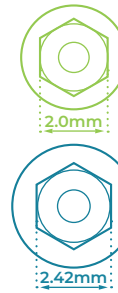
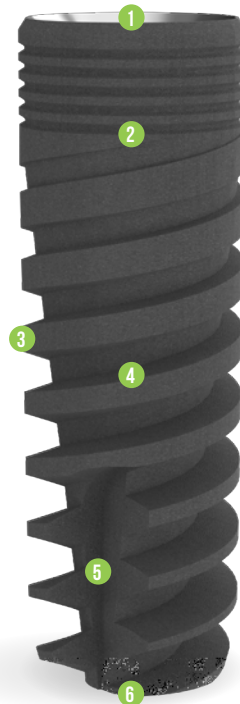
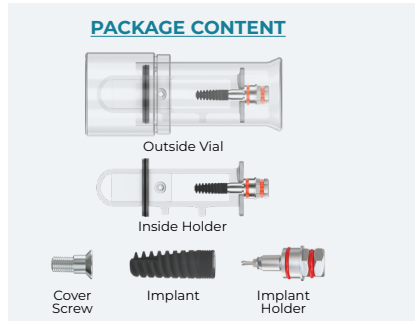
SELF TAPPING SYSTEM

- Self-tapping.
- Self-drilling.
- Increases load distribution.



ROUND APEX

- Enhances implant stability.
- Protects sinus from perforation, and minimizes the risk of anatomical structure damage.



D1 (mm)	D2 (mm)	D3 (mm)	L (mm)	CODE
Ø3.0	Ø2.75	Ø2.3	10	R3010
			11.5	R3011
			13	R3013
Ø3.5	Ø3.1	Ø2.4	8	R3508
			10	R3510
			11.5	R3511
			13	R3513
			16	R3516
Ø3.75	Ø3.75	Ø3.1	6	R3706
			8	R3708
			10	R3710
			11.5	R3711
			13	R3713
			16	R3716
Ø4.2	Ø3.95	Ø3.2	6	R4206
			8	R4208
			10	R4210
			11.5	R4211
Ø5.0	Ø4.6	Ø4.1	13	R4213
			16	R4216
			6	R5006
			8	R5008
Ø5.0	Ø4.6	Ø4.1	10	R5010
			11.5	R5011
			13	R5013
Ø5.0	Ø4.6	Ø4.1	16	R5016

Drilling Protocol	Marking Drill	Drill Bits													
		Ø2.0	Ø2.5	Ø2.8	Ø3.2	Ø2.5x3.75	Ø2.7x4.0	Ø3.65	Countersink Ø3.75x4.2	Ø4.2	Ø4.5				
Ø3.0	Soft Bone	●	○	○	○	○	○	○	○	○	○	○	○	○	○
	Hard Bone	●	○	○	○	○	○	○	○	○	○	○	○	○	○
Ø3.5	Soft Bone	●	○	○	○	○	○	○	○	○	○	○	○	○	○
	Hard Bone	●	○	○	○	○	○	○	○	○	○	○	○	○	○
Ø3.75	Soft Bone	●	○	○	○	○	○	○	○	○	○	○	○	○	○
	Hard Bone	●	○	○	○	○	○	○	○	○	○	○	○	○	○
Ø4.2	Soft Bone	●	○	○	○	○	○	○	○	○	○	○	○	○	○
	Hard Bone	●	○	○	○	○	○	○	○	○	○	○	○	○	○
Ø5.0	Soft Bone	●	○	○	○	○	○	○	○	○	○	○	○	○	○
	Hard Bone	●	○	○	○	○	○	○	○	○	○	○	○	○	○

• The suggested drilling protocol is only a recommendation and should not replace the doctor's opinion.



ABA - Spiral Implant

ABA Implant is a highly compatible implant solution based on the popular **Internal Hexagon connection with SLA - Sand blast, double etched in acid surface treatment.** With its tapered body and exceptional self-drilling capabilities, it establishes a strong and stable connection suitable for immediate loading. ABA Implant can be used in all types of surgical procedures - two stages, immediate loading, and flapless for all types of ridges. It works especially well on narrow ridges without needing prior bone grafting.

- CONNECTION:** Internal Hexagon 2.42mm.
MATERIAL: Ti-6AL-4VELI (Titanium grade 5).
SURFACE TREATMENT: SLA - Sand blast, double etched in acid.
STERILIZATION: Gamma irradiation.

SPECIFICATIONS:

1 CONNECTION AND PLATFORM SWITCHING

- Internal Hexagon 2.42mm - One universal platform for all diameters.
- Minimizes crestal bone loss, promotes bone and soft tissue growth, improves natural aesthetics.

2 TAPERED BODY WITH SPIRAL DESIGN

- Optimal soft tissue support .
- Excellent primary stability.
- Improves bone condensation during insertion.

3 AGGRESSIVE APICAL THREADS

- Allow for more aggressive bone engagement for indications such as immediate extraction sockets, poor bone quality, and immediate loading.

4 SLA - SANDBLAST, LARGE GRIT, ACID-ETCH

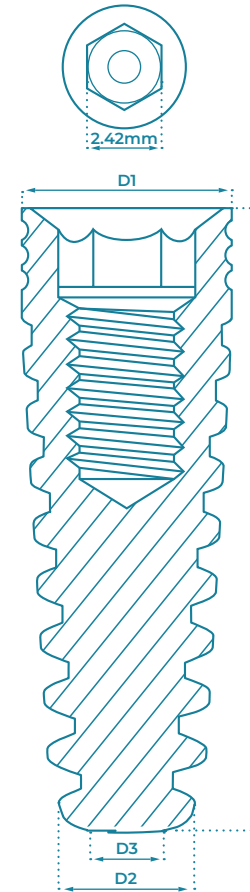
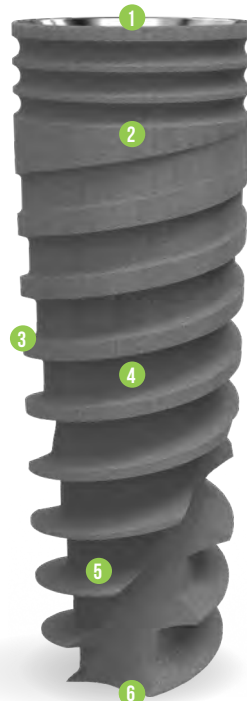
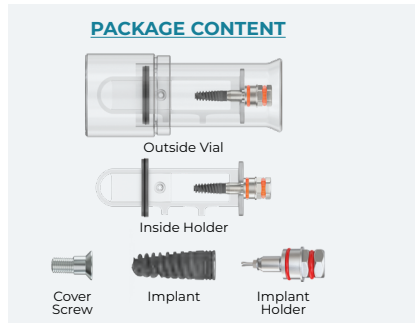
- Enhances dental implant stability and osseointegration, improving long-term success rates.

5 SELF TAPPING SYSTEM

- Self-tapping.
- Self-drilling.
- Increases load distribution.

6 APEX

- Enhances implant stability.
- Sharp and deep threads



D1 (mm)	D2 (mm)	D3 (mm)	L (mm)	CODE
Ø3.5	Ø3.1	Ø2.4	8	A3508
			10	A3510
			11.5	A3511
			13	A3513
			16	A3516
Ø3.75	Ø3.75	Ø3.1	8	A3708
			10	A3710
			11.5	A3711
			13	A3713
Ø4.2	Ø3.95	Ø3.2	6	A4206
			8	A4208
			10	A4210
			11.5	A4211
Ø5.0	Ø4.6	Ø4.1	13	A4213
			16	A4216
			6	A5006
			8	A5008
Ø6.0	Ø5.6	Ø5.1	10	A5010
			11.5	A5011
			13	A5013
			16	A5016
Ø6.0	Ø5.6	Ø5.1	6	A6006
			8	A6008
			10	A6010
Ø6.0	Ø5.6	Ø5.1	11.5	A6011
			13	A6013

Drilling Protocol	Marking Drill	Ø2.0	Ø2.5	Ø2.8	Ø3.2	Ø2.5x3.75	Ø2.7x4.0	Ø3.65	Countersink Ø3.75x4.2	Ø4.2	Ø4.5	Ø5.2	Countersink Ø5.0x6.0															
		<table border="0"> <tr> <td>Soft Bone</td> <td>●</td><td>○</td><td>○</td><td>○</td><td>○</td><td>○</td><td>○</td><td>○</td><td>○</td><td>○</td><td>○</td><td>○</td><td>○</td> </tr> <tr> <td>Hard Bone</td> <td>○</td><td>○</td><td>○</td><td>○</td><td>○</td><td>○</td><td>○</td><td>○</td><td>○</td><td>○</td><td>○</td><td>○</td><td>○</td> </tr> </table>	Soft Bone	●	○	○	○	○	○	○	○	○	○	○	○	○	Hard Bone	○	○	○	○	○	○	○	○	○	○	○
Soft Bone	●	○	○	○	○	○	○	○	○	○	○	○	○															
Hard Bone	○	○	○	○	○	○	○	○	○	○	○	○	○															
<table border="0"> <tr> <td>Soft Bone</td> <td>●</td><td>○</td><td>○</td><td>○</td><td>○</td><td>○</td><td>○</td><td>○</td><td>○</td><td>○</td><td>○</td><td>○</td><td>○</td> </tr> <tr> <td>Hard Bone</td> <td>○</td><td>○</td><td>○</td><td>○</td><td>○</td><td>○</td><td>○</td><td>○</td><td>○</td><td>○</td><td>○</td><td>○</td><td>○</td> </tr> </table>	Soft Bone	●	○	○	○	○	○	○	○	○	○	○	○	○	Hard Bone	○	○	○	○	○	○	○	○	○	○	○	○	○
Soft Bone	●	○	○	○	○	○	○	○	○	○	○	○	○															
Hard Bone	○	○	○	○	○	○	○	○	○	○	○	○	○															
<table border="0"> <tr> <td>Soft Bone</td> <td>●</td><td>○</td><td>○</td><td>○</td><td>○</td><td>○</td><td>○</td><td>○</td><td>○</td><td>○</td><td>○</td><td>○</td><td>○</td> </tr> <tr> <td>Hard Bone</td> <td>○</td><td>○</td><td>○</td><td>○</td><td>○</td><td>○</td><td>○</td><td>○</td><td>○</td><td>○</td><td>○</td><td>○</td><td>○</td> </tr> </table>	Soft Bone	●	○	○	○	○	○	○	○	○	○	○	○	○	Hard Bone	○	○	○	○	○	○	○	○	○	○	○	○	○
Soft Bone	●	○	○	○	○	○	○	○	○	○	○	○	○															
Hard Bone	○	○	○	○	○	○	○	○	○	○	○	○	○															
<table border="0"> <tr> <td>Soft Bone</td> <td>●</td><td>○</td><td>○</td><td>○</td><td>○</td><td>○</td><td>○</td><td>○</td><td>○</td><td>○</td><td>○</td><td>○</td><td>○</td> </tr> <tr> <td>Hard Bone</td> <td>○</td><td>○</td><td>○</td><td>○</td><td>○</td><td>○</td><td>○</td><td>○</td><td>○</td><td>○</td><td>○</td><td>○</td><td>○</td> </tr> </table>	Soft Bone	●	○	○	○	○	○	○	○	○	○	○	○	○	Hard Bone	○	○	○	○	○	○	○	○	○	○	○	○	○
Soft Bone	●	○	○	○	○	○	○	○	○	○	○	○	○															
Hard Bone	○	○	○	○	○	○	○	○	○	○	○	○	○															

• The suggested drilling protocol is only a recommendation and should not replace the doctor's opinion.



CFI - Cylindrical Implant

CFI Implant is a highly compatible implant solution based on the popular **Internal Hexagon connection** with **SLA - Sand blast, double etched in acid surface treatment**. perfect for dense bone cases, but appropriate for all types of bone augmentation procedures. It's strong fit and proven tapered design ensure reliability. Micro rings optimize shear strength, while the combined cylindrical and conical shape with V-shaped threads enhance stability. The flat-cutting apex allows final adjustments during placement.

CONNECTION: Internal Hexagon 2.42mm.

MATERIAL: Ti-6AL-4VELI (Titanium grade 5).

SURFACE TREATMENT: SLA - Sand blast, double etched in acid.

STERILIZATION: Gamma irradiation.

SPECIFICATIONS:

CONNECTION AND PLATFORM SWITCHING

- Internal Hexagon 2.42mm - One universal platform for all diameters.
- Minimizes crestal bone loss, promotes bone and soft tissue growth, improves natural aesthetics.

V-SHAPED THREADS AND MICRO RINGS

- Improved Stability.
- Deliver optimal surface area, better load distribution, and reduced crestal stress.

TAPERED BODY WITH CYLINDRICAL AND CONICAL SHAPE

- Excellent primary stability.
- Cylindrical shape promotes long-term osseointegration by enlarging surface area and bone to implant contact.

SLA - SANDBLAST, LARGE GRIT, ACID-ETCH

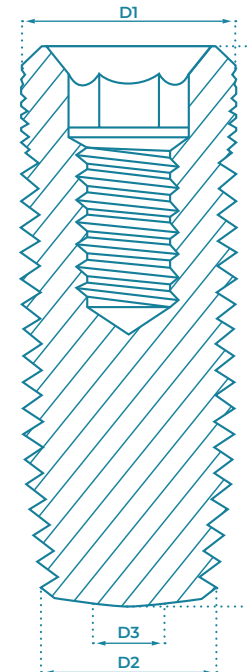
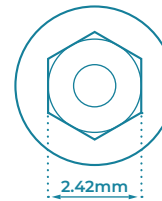
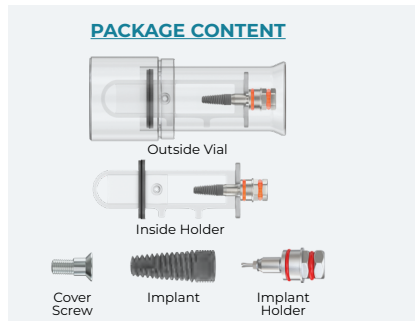
- Enhances dental implant stability and osseointegration, improving long-term success rates.

SELF TAPPING SYSTEM

- Self-tapping.
- Self-drilling.
- Increases load distribution.

FLAT APEX

- Enhances implant stability.
- Allows final adjustments during placement.



D1 (mm)	D2 (mm)	D3 (mm)	L (mm)	CODE
Ø3.5	Ø2.8	Ø2.1	8	C3508
			10	C3510
			11.5	C3511
			13	C3513
			16	C3516
Ø3.75	Ø3.2	Ø2.5	8	C3708
			10	C3710
			11.5	C3711
			13	C3713
			16	C3716
Ø4.2	Ø3.6	Ø2.9	6	C4206
			8	C4208
			10	C4210
			11.5	C4211
			13	C4213
Ø5.0	Ø4.2	Ø3.5	6	C5006
			8	C5008
			10	C5010
			11.5	C5011
			13	C5013
Ø6.0	Ø5.2	Ø4.5	6	C6006
			8	C6008
			10	C6010
			11.5	C6011
			13	C6013

Drilling Protocol

• The suggested drilling protocol is only a recommendation and should not replace the doctor's opinion.



MAX - Basal/Cortical Spiral Implant

MAX Implant is a highly compatible implant solution based on the popular **Internal Hexagon connection with RBM - Resorbable Blast Media surface treatment.** Specially recommended for soft bone, but suitable for all bone types. MAX offers sharp, deep threads and aggressive threads, and can be placed immediately without the waiting period of osteointegration or additional augmentation with bone replacement materials. The implant is placed with the threads orthogonally to the occlusion load, ensuring remarkable stability in the cortical bone and improving chewing load distribution.

CONNECTION: Internal Hexagon 2.42mm.

MATERIAL: Ti-6AL-4VELI (Titanium grade 5).

SURFACE TREATMENT: RBM - Resorbable Blast Media.

STERILIZATION: Gamma irradiation.

SPECIFICATIONS:

1 CONNECTION AND PLATFORM SWITCHING

- Internal Hexagon 2.42mm - One universal platform for all diameters.
- Minimizes crestal bone loss, promotes bone and soft tissue growth, improves natural aesthetics.

2 BASAL/CORTICAL BONE POSITIONING

- Smooth-surface neck.
- Ideal for patients with bone structure problems.
- Better chance of success and durability.
- Even chewing load distribution.

3 SHARP, DEEP, AND AGGRESSIVE THREADS

- Can be placed immediately without the waiting period of osteointegration or additional augmentation with bone replacement materials.

4 RBM - RESORBABLE BLAST MEDIA

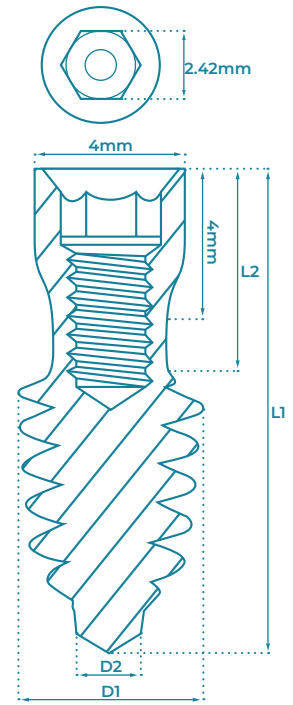
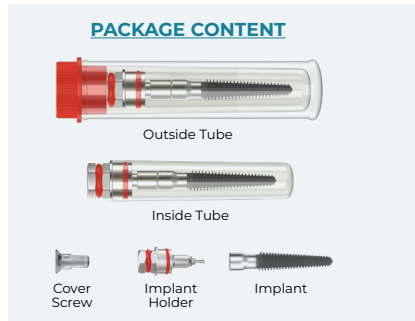
- Promotes faster and stronger bone integration, enhancing the stability of dental implants.

5 TAPERED THREAD AND TAPERED CORE BODY

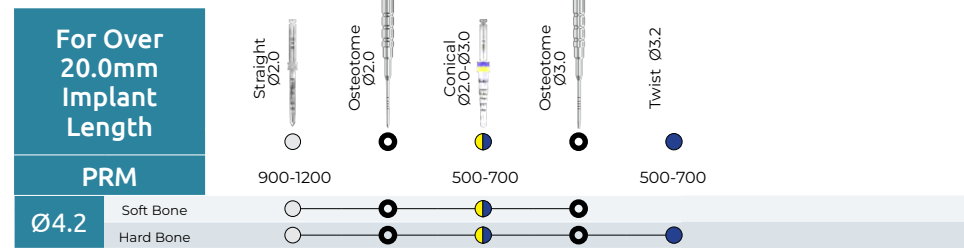
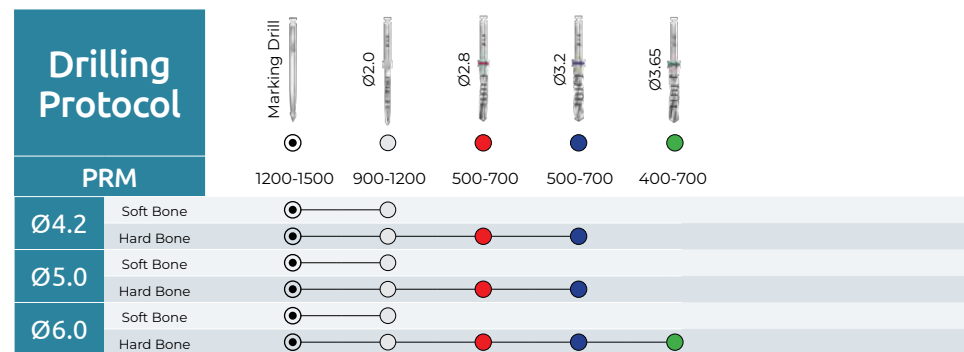
- Excellent primary stability.
- Improves bone condensation during insertion.

6 SELF TAPPING SYSTEM

- Self-tapping.
- Minimal drilling.



D1 (mm)	D2 (mm)	L1 (mm)	L2 (mm)	CODE
Ø4.2	1.8	10	4.5	G4210
	1.8	11.5	4.7	G4211
	1.8	13	5	G4213
	1.8	16	6	G4216
	2.5	18	7	G4218
	2.5	20	7.5	G4220
Ø5.0	2.5	22.5	7.5	G4222
	2.5	25	7.5	G4225
	1.8	8	4.1	G5008
	1.8	10	4.5	G5010
	1.8	11.5	4.7	G5011
	1.8	13	5	G5013
Ø6.0	1.8	16	6	G5016
	1.8	18	7	G5018
	1.8	20	7.5	G5020
	2	8	4.1	G6008
	2	10	4.5	G6010
	2	11.5	4.7	G6011
	2	13	5	G6013
	2	16	6	G6016



• The suggested drilling protocol is only a recommendation and should not replace the doctor's opinion.



ZYG - Zygomatic Implant

ZYG Implant is a highly compatible implant solution based on the popular **Internal Hexagon connection with RBM - Resorbable Blast Media surface treatment**, specifically created to address issues concerning a depleted upper jawbone, making them highly suitable for graft-less treatment with immediate loading. The smooth and polished implant neck facilitates effortless insertion, and the sharp and robust threads at the apex firmly anchor the implant to the zygomatic bone. These implants are intentionally designed for an extramaxillary approach.

CONNECTION: Internal Hexagon 2.42mm.

MATERIAL: Ti-6AL-4VELI (Titanium grade 5).

SURFACE TREATMENT: RBM - Resorbable Blast Media.

STERILIZATION: Gamma irradiation.

SPECIFICATIONS:



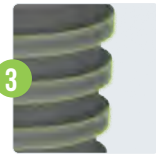
CONNECTION

- Internal Hexagon 2.42mm.
- Minimizes crestal bone loss, promotes bone and soft tissue growth, improves natural aesthetics.



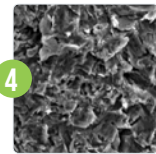
SMOOTH SURFACE NECK

- Easy insertion to the zygomatic bone.



AGGRESSIVE APICAL THREADS

- Allow for more aggressive bone engagement for indications such as immediate extraction sockets, poor bone quality, and immediate loading.



RBM - RESORBABLE BLAST MEDIA

- Promotes faster and stronger bone integration, enhancing the stability of dental implants.



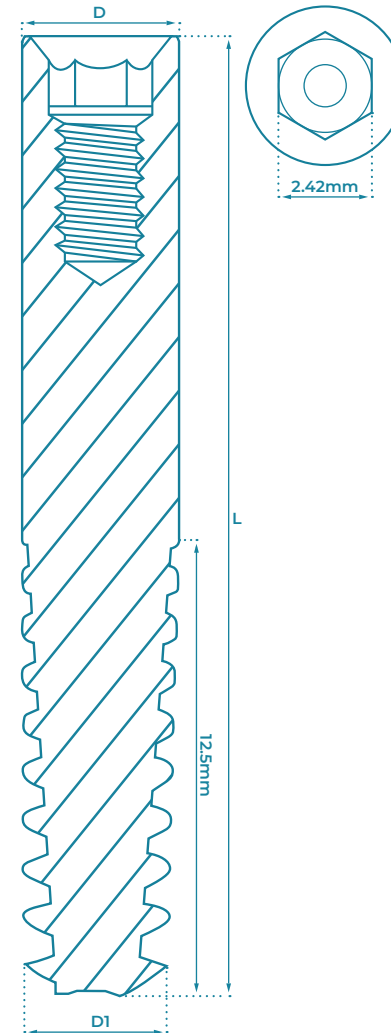
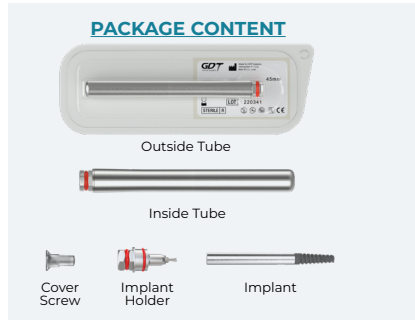
TAPERED BODY WITH SPIRAL DESIGN

- Optimal soft tissue support .
- Excellent primary stability.
- Improves bone condensation during insertion.



SELF TAPPING SYSTEM

- Self-tapping.
- Minimal drilling.
- Increases load distribution.



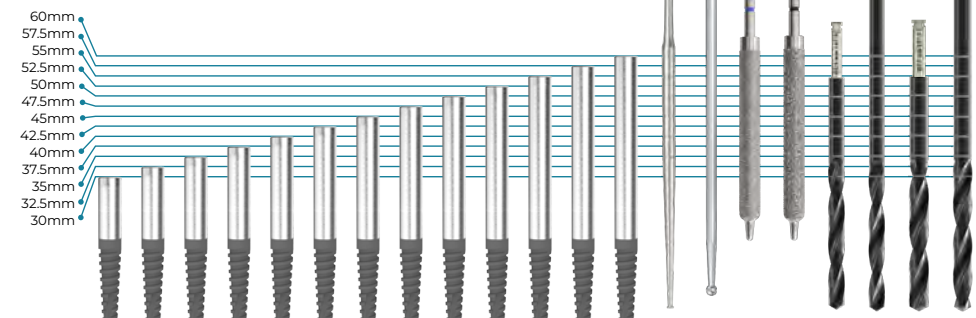
D (mm)	D1 (mm)	L (mm)	CODE
Ø4.2	3.5	30	Z4230
		32.5	Z4232
		35	Z4235
		37.5	Z4237
		40	Z4240
		42.5	Z4242
		45	Z4245
		47.5	Z4247
		50	Z4250
		52.5	Z4252
		55	Z4255
57.5	Z4257		
60	Z4260		

DRILLING PROCEEDURE

- Irrigation is strongly advised throughout the drilling procedure. When drilling with irrigation, use an intermittent motion to allow debris to be flushed away.
- Continue until the required depth is reached.
- Do not exceed 1500rpm.

CAUTION

- During drilling procedures, avoid lateral pressure on the drills - Lateral pressure to the drill can cause drill fracture.
- Before beginning drilling activities, ensure that the drill is properly fastened into the hand-piece.



• The suggested drilling protocol is only a recommendation and should not replace the doctor's opinion.

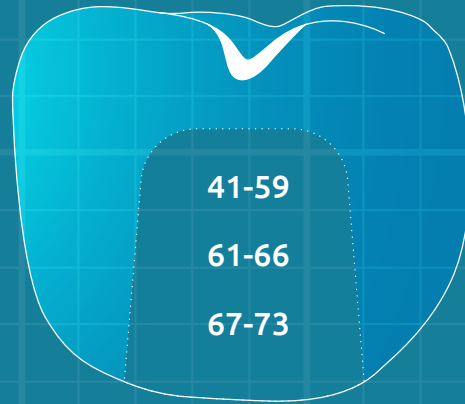


INTERNAL HEXAGON PROSTHETICS

Cement-Retained Restoration

Screw-Retained Restoration

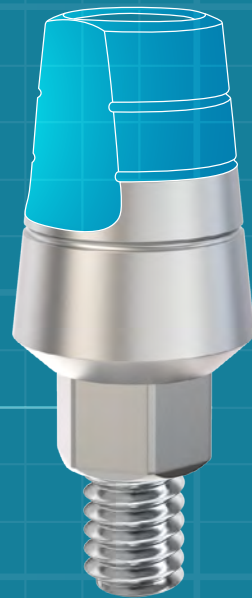
Overdenture Restoration



41-59

61-66

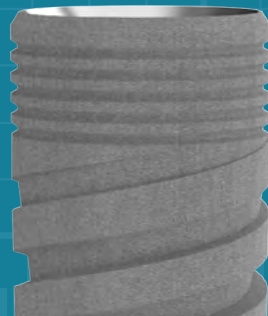
67-73



 MADE IN ISRAEL



Scan the QR Code
to visit GDT Implants website



INTERNAL HEXAGON PROSTHETICS

CEMENT-RETAINED RESTORATION

Healing Caps

42-43

Screws

43

Impression Coping Transfers

44-45

Analogs

46-47

Straight Abutments

48-49

Angulated Abutments

50-51

Temporary Abutments

52-53

Zirconia Abutments

54-55

Casting Abutments

56-57

CAD/CAM Abutments

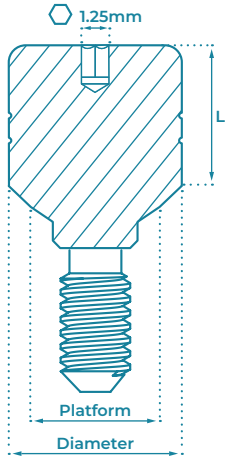
58-60

HEALING CAPS

Their primary purpose is to facilitate the healing process of both soft and hard tissues surrounding the implant. These caps not only protect the implant from the accumulation of plaque and debris but also aid in shaping the gumline for optimal aesthetics.

MATERIAL:
Ti-6AL-4VELI (Titanium grade 5).

TORQUE TIGHTENING:
15 Ncm (Recommendation).



SLIM					Platform - Ø3mm Diameter - Ø3.5mm	
L	2mm	3mm	4mm	5mm	6mm	



CODE	HCS2-SL	HCS3-SL	HCS4-SL	HCS5-SL	HCS6-SL
------	---------	---------	---------	---------	---------

NARROW					Platform - Ø3.8mm Diameter - Ø3.8mm	
L	3mm	4mm	5mm	6mm	7mm	



CODE	HCN3	HCN4	HCN5	HCN6	HCN7
------	------	------	------	------	------

STANDARD					Platform - Ø3.8mm Diameter - Ø4.5mm	
L	2mm	3mm	4mm	5mm	6mm	7mm



CODE	HCS2	HCS3	HCS4	HCS5	HCS6	HCS7
------	------	------	------	------	------	------

WIDE					Platform - Ø3.8mm Diameter - Ø5.5mm	
L	2mm	3mm	4mm	5mm	6mm	7mm



CODE	HCW2	HCW3	HCW4	HCW5	HCW6	HCW7
------	------	------	------	------	------	------

EXTRA WIDE				Platform - Ø3.8mm Diameter - Ø6.3mm	
L	2mm	3mm	4mm	5mm	



CODE	HCEW2	HCEW3	HCEW4	HCEW5
------	-------	-------	-------	-------

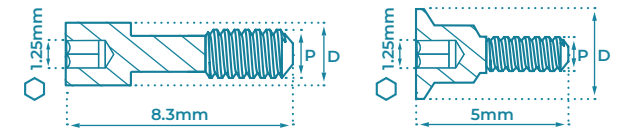
CONCAVE					Platform - Ø3.8mm Diameter - Ø4.5mm	
L	2mm	3mm	4mm	5mm	6mm	7mm



CODE	HCV2	HCV3	HCV4	HCV5	HCV6	HCV7
------	------	------	------	------	------	------

SCREWS

MATERIAL:
Ti-6AL-4VELI (Titanium grade 5).

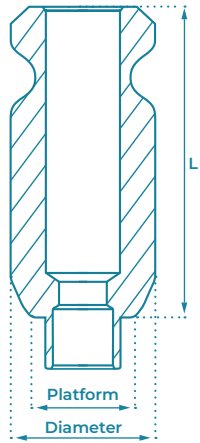


ABUTMENT SCREWS		COVER SCREWS	
TYPE	Slim	Standard	Standard
P	Ø1.55mm	Ø1.75mm	Ø1.75mm
D	Ø1.8mm	Ø2.0mm	Ø3.8mm



CODE	SA-SL	SA	CS-SL	CS
------	-------	----	-------	----





IMPRESSION COPING TRANSFERS

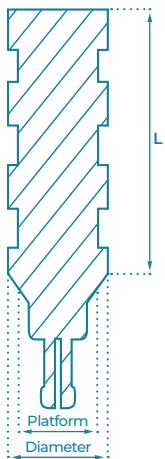
Provide accuracy during impression-taking to ensure the best possible results with every use. Can be safely sterilized in an autoclave for added security. Ideal for single tooth restorations, bridges, partial dentures, and full dentures alike.

MATERIAL:
Stainless Steel.

PACKAGED WITH:
Screw for Closed Tray 16mm / Open Tray 22mm.

	SLIM		NARROW		STANDARD	
TYPE	Closed Tray	Open Tray	Closed Tray	Open Tray	Closed Tray	Open Tray
L		11.5mm		11.5mm	10mm	13mm
P		Ø3mm		Ø3.8mm		Ø3.8mm
D		Ø3.5mm		Ø3.8mm		Ø4.5mm

CODE	STRC-SL	STRO-SL	NTRC	NTRO	STRC	STRO



	CLIP TRANSFERS	
	Platform - Ø3.75mm Diameter - Ø4.5mm	
TYPE	Closed Tray	
L	9mm	14.5mm

CODE	CTR9	CTR13

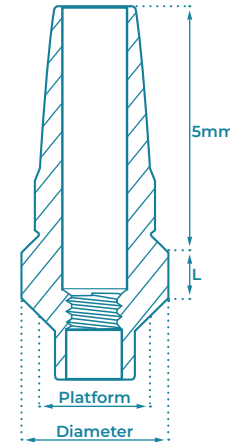
Snap-cap Transfer abutment enables quick and simple impression taking. The cap remains in the impression tray after it is removed from the mouth.

ABUTMENT MATERIAL: Ti-6AL-4VELI (Titanium grade 5).

SNAP-CAP MATERIAL: Acetal Polymer.

PACKAGED WITH: Abutment Screw SA, and Snap-cap PSOC.

TORQUE TIGHTENING: 25 Ncm (Recommendation).



	SNAP-ON TRANSFERS			
	Platform - Ø3.8mm Diameter - Ø4.8mm			
L	1mm	2mm	3mm	4mm
CODE	SOC1	SOC2	SOC3	SOC4

	CONCAVE SNAP-ON TRANSFERS			
	Platform - Ø3.8mm Diameter - Ø4.5mm			
L	1mm	2mm	3mm	4mm
CODE	SOV1	SOV2	SOV3	SOV4

	SNAP-ON CAP
CODE	PSOC

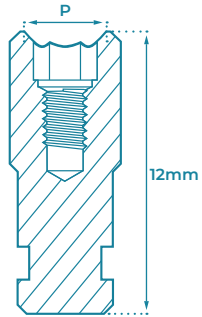
	OVERDENTURE		MULTI-UNIT 1.6mm		MULTI-UNIT 1.4mm	
TYPE	GdtLoc / Ball	Click	Closed Tray	Open Tray	Closed Tray	Open Tray
L	5.6	11.3	7mm	15mm	14mm	16mm
D	Ø4.6	Ø4.8	Ø4.8mm	Ø5mm	Ø4.9mm	Ø5mm




CODE	TFB	TFL	MU-TCT	MU-TOT	NM-TCT	NM-TOT

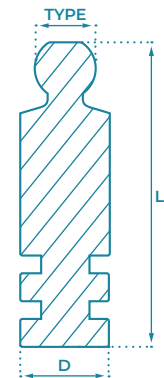
ANALOGS

The analog provides a replica that shows the exact position of a patient's implant. It is made by taking an impression of the patient's teeth and implants and using that impression to create a copy that exactly shows the anatomy of the implant as it exists in the patient's mouth.

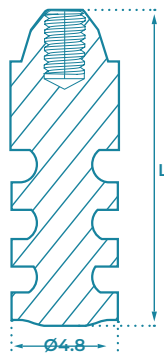
MATERIAL: Stainless Steel.





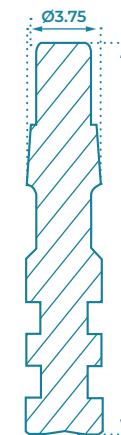
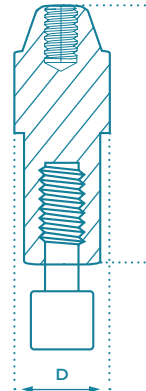
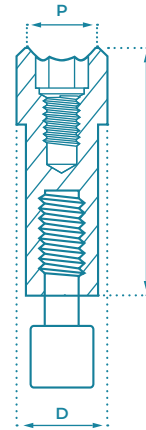
IMPLANT ANALOGS			
TYPE	Slim Ø Platform - 2mm	Standard	Wide
D	Ø3mm	Ø3.75mm	Ø5mm
			
CODE	ANG-SL	ANG	ANGW





OVERDENTURE RESTORATIONS ANALOGS			
TYPE	GdtLoc	Ball	Click
L	14mm	15mm	10.5mm
D	Ø4mm	Ø3.75mm	Ø3.75mm
			
CODE	AFE	AFB	AFL





SCREW-RETAINED RESTORATIONS ANALOGS			
TYPE	Multi-Unit 1.6mm	Multi-Unit 1.4mm	
L	13.5mm	18mm	
D	Ø4.75mm	Ø4.9mm	
			
CODE	MU-ANG	NM-ANG	





CAD/CAM 3D PRINTING ANALOGS

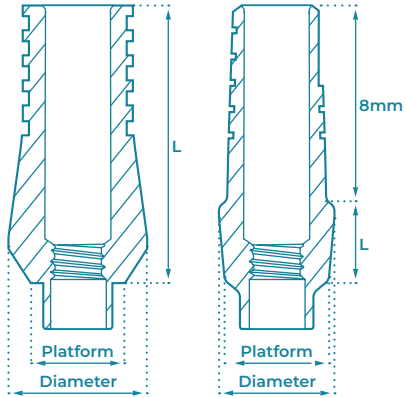
FOR IMPLANTS		
TYPE	Slim Ø Platform - 2mm	Standard
L	10mm	12mm
D	Ø3mm	Ø3.75mm
		
CODE	ANG3D-SL	ANG3D

FOR SCREW-RETAINED RESTORATIONS		
TYPE	Multi-Unit 1.6mm	Multi-Unit 1.4mm
L	12mm	9mm
D	Ø4.75mm	Ø4.9mm
		
CODE	MU-ANG3D	NM-ANG3D

ONE-PIECE IMPLANT ANALOGS

FOR ONE-PIECE IMPLANTS		
TYPE	For OPI	For Bendable - OPIB
L	19mm	18mm
		
CODE	AOP	ABOP





STRAIGHT ABUTMENTS

Straight abutments create a tight seal and strong connection to the implant. Stable and reduce trauma during restoration placement. The shoulder / anatomic / concave Straight Abutments are particularly great for aesthetics and promote faster healing while protecting the implant.

MATERIAL:
Ti-6AL-4VELI (Titanium grade 5).

PACKAGED WITH:
Abutment Fixation Screw SA / SA-SL.

TORQUE TIGHTENING:
25 Ncm (Recommendation).

SLIM	Ø3mm	NARROW		Platform - Ø3.8mm Diameter - Ø3.8mm	
	Ø3.5mm				
L	9mm	5mm	7mm	9mm	11mm
CODE	SA9-SL	SAN5	SAN7	SAN9	SANT1

STANDARD						Platform - Ø3.8mm Diameter - Ø4.5mm
L	5mm	7mm	9mm	11mm	13mm	15mm
CODE	SA5	SA7	SA9	SA11	SA13	SA15

WIDE			Platform - Ø3.8mm Diameter - Ø5.5mm
L	9mm	12mm	13mm
CODE	SAW9	SAW12	SAW13



SLIM WITH SHOULDER			Platform - Ø3mm Diameter - Ø3.8mm
L	1mm	2mm	3mm
CODE	SAS1-SL	SAS2-SL	SAS3-SL

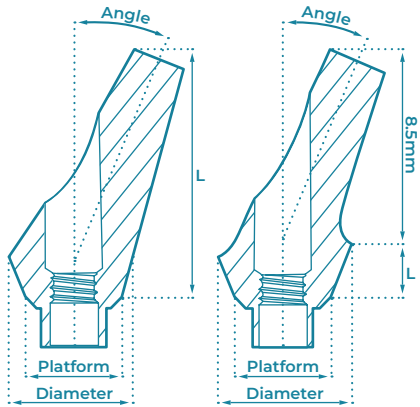
STANDARD WITH SHOULDER				Platform - Ø3.8mm Diameter - Ø4.5mm
L	1mm	2mm	3mm	4mm
CODE	SAS1	SAS2	SAS3	SAS4

WIDE WITH SHOULDER				Platform - Ø3.8mm Diameter - Ø5.5mm
L	1mm	2mm	3mm	4mm
CODE	SAW1	SAW2	SAW3	SAW4

ANATOMIC			Platform - Ø3.8mm Diameter - Ø5.2mm
L	1mm	2mm	3mm
CODE	SAA1	SAA2	SAA3

CONCAVE				Platform - Ø3.8mm Diameter - Ø5mm
L	1mm	2mm	3mm	4mm
CODE	SAV1	SAV2	SAV3	SAV4





ANGULATED ABUTMENTS

Can be used in a single tooth and partially or totally edentulous situations. Used in the fabrication of cement-retained restorations, single crowns, or bridges, can be used in unparalleled implant placement cases for angle compensation.

MATERIAL:
Ti-6AL-4VELI (Titanium grade 5).

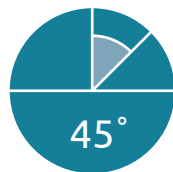
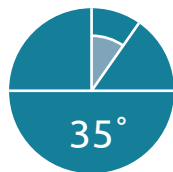
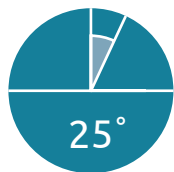
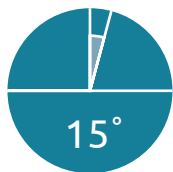
PACKAGED WITH:
Abutment Fixation Screw SA / SA-SL.

TORQUE TIGHTENING:
25 Ncm (Recommendation).

L	SLIM 15°	STANDARD 15°	Platform - Ø3.8mm Diameter - Ø4.5mm
		Ø3mm Ø4mm	9mm



L	STANDARD 25°	35°	45°
		Ø3.8mm Ø4.5mm	Ø3.8mm Ø4.5mm
	9mm	9mm	9mm



The anatomic and concave abutments are particularly great for aesthetics and promote faster healing while protecting the implant.

L	ANATOMIC 15°			Platform - Ø3.8mm Diameter - Ø5.2mm
		1mm	2mm	3mm

CODE	ATA1501	ATA1502	ATA1503	ATA1504
------	---------	---------	---------	---------

L	ANATOMIC 25°			Platform - Ø3.8mm Diameter - Ø5.2mm
		1mm	2mm	3mm

CODE	ATA2501	ATA2502	ATA2503	ATA2504
------	---------	---------	---------	---------

L	CONCAVE 15°			Platform - Ø3.8mm Diameter - Ø5mm
		1mm	2mm	3mm

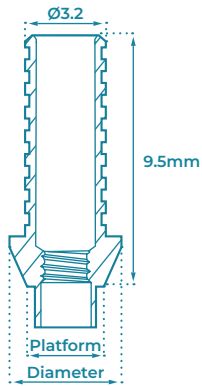
CODE	ATV1501	ATV1502	ATV1503	ATV1504
------	---------	---------	---------	---------

L	CONCAVE 25°			Platform - Ø3.8mm Diameter - Ø5mm
		1mm	2mm	3mm

CODE	ATV2501	ATV2502	ATV2503	ATV2504
------	---------	---------	---------	---------



TEMPORARY ABUTMENTS



TITANIUM ABUTMENTS

Easily adapts to a gingival tissue and makes a perfect solid marginal seal between the abutment and the implant.

MATERIAL: Ti-6AL-4VELI (Titanium grade 5).

PACKAGED WITH: Abutment Fixation Screw SA.

TORQUE TIGHTENING: 20 Ncm (Recommendation).

TITANIUM ABUTMENTS

Platform - Ø3.8mm
Diameter - Ø4.7mm

TYPE

Anti-rotational

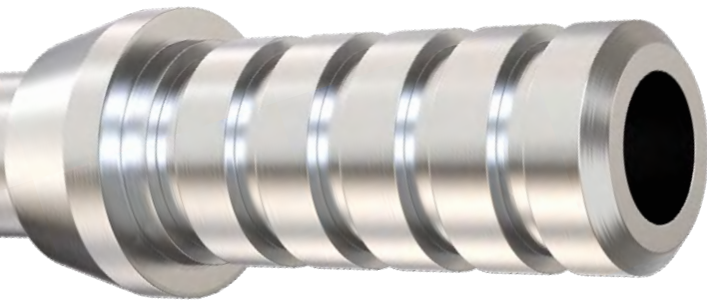
Anti-rotational



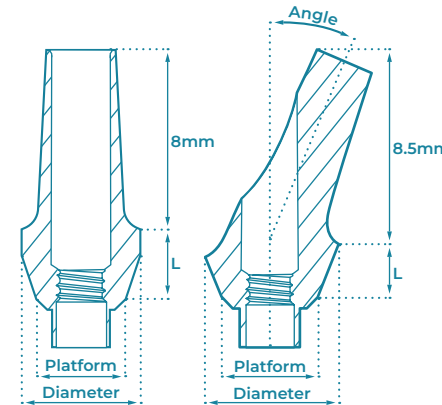
CODE

STAR

STAN



22
Ti
Titanium
47.867



PEEK ABUTMENTS

PEEK is described as an excellent combination of strength and elasticity. It is one of the most chemically resistant materials, biocompatible and aesthetic, with low electrical conductivity. The PEEK components are used for short term rehabilitation.

MATERIAL: PEEK (Polyether ether ketone).

PACKAGED WITH: Abutment Fixation Screw SA.

TORQUE TIGHTENING: 15 Ncm (Recommendation).

ANATOMIC 0°

Platform - Ø3.8mm
Diameter - Ø4.7mm

L

1mm

2mm

3mm



CODE

PAT1

PAT2

PAT3

ANATOMIC 15°

Platform - Ø3.8mm
Diameter - Ø5.2mm

L

1mm

2mm

3mm



CODE

PAT1501

PAT1502

PAT1503

ANATOMIC 25°

Platform - Ø3.8mm
Diameter - Ø5.2mm

L

1mm

2mm

3mm



CODE

PAT2501

PAT2502

PAT2503



ZIRCONIA ABUTMENTS WITH TITANIUM BASE

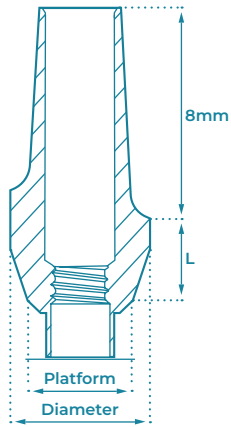
Zirconia exhibits exceptional resistance to high temperatures and corrosion caused by alkalis, acids, salt water, and various other substances. Lighter than metal, zirconia possesses remarkable strength, malleability, and ductility. Its chemical and physical characteristics bear resemblance to those of titanium. Highly aesthetic and especially good for anterior restorations.

ABUTMENT MATERIAL: Zirconia (ZrO₂) With Ti-6AL-4VELI (Titanium grade 5) Base.

SCREW MATERIAL: Ti-6AL-4VELI (Titanium grade 5).

PACKAGED WITH: Fixation Screw for Zirconia Abutments ZSA.

TORQUE TIGHTENING: 30 Ncm (Recommendation).



SLIM 0°		Platform - Ø3mm
		Diameter - Ø3.8mm
L	2mm	

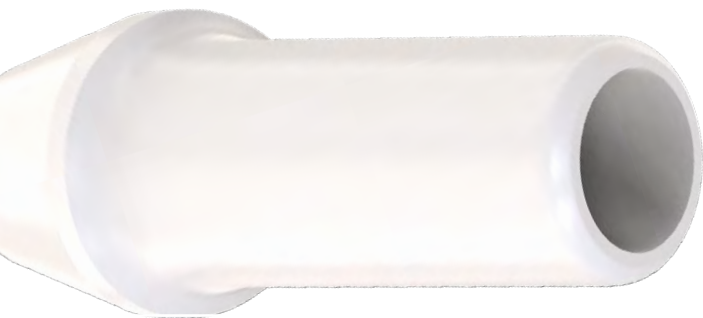
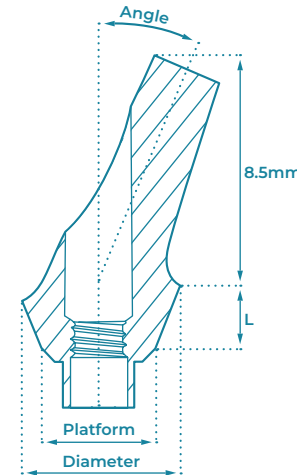


CODE	ZAT1-SL	
------	---------	--

STANDARD 0°			Platform - Ø3.8mm
			Diameter - Ø5.2mm
L	1mm	2mm	3mm



CODE	ZAT1	ZAT2	ZAT3
------	------	------	------



SLIM 15°		Platform - Ø3mm
		Diameter - Ø5.5mm
L	1.5mm	



CODE	ZAT15-SL	
------	----------	--

STANDARD 15°			Platform - Ø3.8mm
			Diameter - Ø5.5mm
L	1mm	2mm	3mm



CODE	ZAT1501	ZAT1502	ZAT1503
------	---------	---------	---------

STANDARD 25°			Platform - Ø3.8mm
			Diameter - Ø5.45mm
L	1mm	2mm	3mm



CODE	ZAT2501	ZAT2502	ZAT2503
------	---------	---------	---------

FIXATION SCREW FOR ZIRCONIA ABUTMENTS



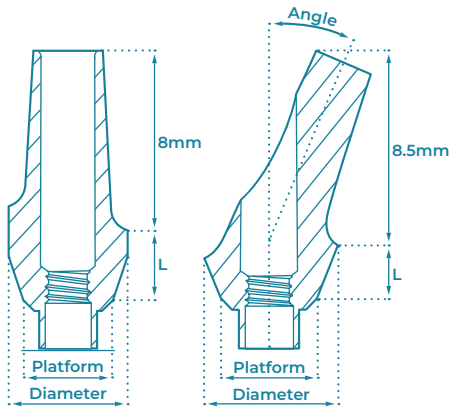
CODE	ZSA	
------	-----	--



CASTING ABUTMENTS

Used by dental technicians for constructing prosthetic restoration, provide excellent grip and optimal connection to the implant. Made of a very strong plastic material that retains its shape.

MATERIAL: Polyoxymethylene (POM).
PACKAGED WITH: Abutment Fixation Screw SA / SA-SL.
TORQUE TIGHTENING: 15 Ncm (Recommendation).



ANATOMIC 0°			Platform - Ø3.8mm Diameter - Ø4.5mm
L	1mm	2mm	3mm



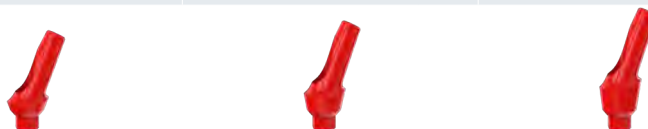
CODE	PSA1	PSA2	PSA3
------	------	------	------

ANATOMIC 15°			Platform - Ø3.8mm Diameter - Ø5mm
L	1mm	2mm	3mm

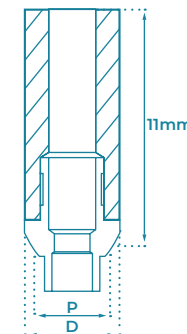
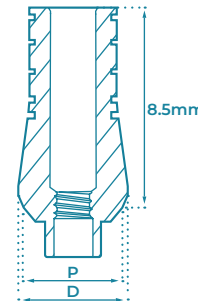
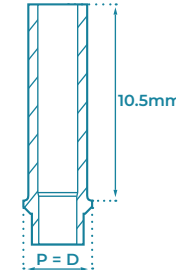
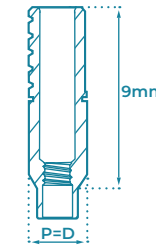


CODE	PAA1501	PAA1502	PAA1503
------	---------	---------	---------

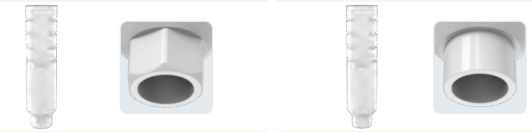
ANATOMIC 25°			Platform - Ø3.8mm Diameter - Ø5mm
L	1mm	2mm	3mm



CODE	PAA2501	PAA2502	PAA2503
------	---------	---------	---------



SLIM		(P) Platform - Ø3mm (D) Diameter - Ø3mm
TYPE	Anti-rotational	Rotational



CODE	PCW-SL	PCN-SL
------	--------	--------

NARROW		(P) Platform - Ø3.8mm (D) Diameter - Ø3.8mm
TYPE	Anti-rotational	Rotational



CODE	PCW	PCN
------	-----	-----

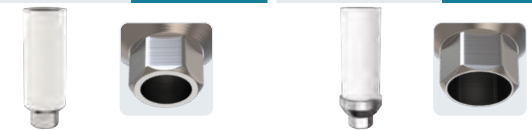
STANDARD		(P) Platform - Ø3.8mm (D) Diameter - Ø4.5mm
TYPE	Anti-rotational	Rotational



CODE	PSAW	PSAN
------	------	------

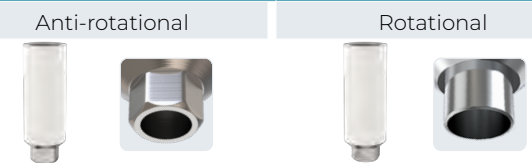
TITANIUM / CHROME BASE TORQUE TIGHTENING: 30 Ncm (Recommendation).

UCLA		(P) Platform - Ø3.8mm
TYPE	Standard D - Ø4.5mm	Wide D - Ø5.4mm



CODE	PTB	PTBW
------	-----	------

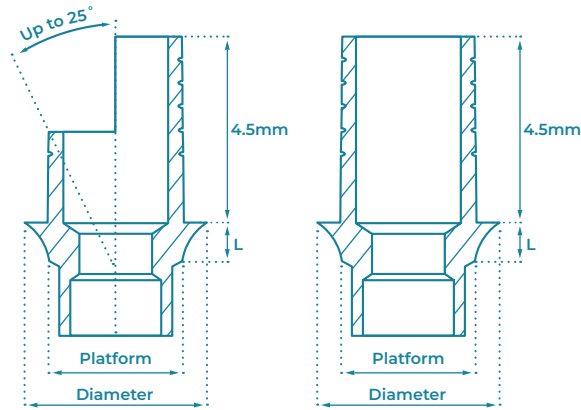
CHROME COBALT BASE		(P) Platform - Ø3.8mm (D) Diameter - Ø4.5mm
TYPE	Anti-rotational	Rotational



CODE	CCBW	CCBN
------	------	------



CAD/CAM ABUTMENTS



GDT 3D CAD/CAM libraries make it easy to design, and create your restorations for our implant platforms.

Fully supported by the top CAD/CAM systems: **Exocad and 3Shape.**

Our libraries enable precise computerized planning by scanning implants and abutments of all types, the scanned information used for creating restorations.

The CAD/CAM technology simplifies the process, ensuring accuracy, and speed.

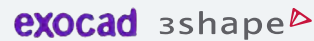
MATERIAL: Ti-6AL-4VELI (Titanium grade 5).

PACKAGED WITH: Abutment Fixation Screw SA / SA-SL / MU-SA / NM-SA.

TORQUE TIGHTENING: SA screw - 25 Ncm (Recommendation).
 MU-SA screw, and NM-SA screw- 15 Ncm (Recommendation).



Scan QR code or refer to GDT Implants website to download our libraries: www.gdentalt.com/cadcam



Scan QR code to watch video



SLIM		P - Ø3mm D - Ø3.75mm		STRAIGHT TITANIUM BASES				Platform - Ø3.8mm Diameter - Ø4.5mm		
TYPE		Anti-Rotational								
L	0.5mm	0.5mm	1mm	2mm	3mm	4mm				
CODE		TBS-SL	TBS	TBS1	TBS2	TBS3	TBS4			
SLIM		P - Ø3mm D - Ø3.75mm		STRAIGHT TITANIUM BASES				Platform - Ø3.8mm Diameter - Ø4.5mm		
TYPE		Rotational								
L	0.5mm	0.5mm	1mm	2mm	3mm	4mm				
CODE		TBSN-SL	TBSN	TBSN1	TBSN2	TBSN3	TBSN4			
ANGULATED TITANIUM BASES							Platform - Ø3.8mm Diameter - Ø4.5mm			
TYPE		Anti-Rotational								
L	0.5mm	1mm	2mm	3mm	4mm					
CODE		ATBS	ATBS1	ATBS2	ATBS3	ATBS4				
ANGULATED TITANIUM BASES							Platform - Ø3.8mm Diameter - Ø4.5mm			
TYPE		Rotational								
L	0.5mm	1mm	2mm	3mm	4mm					
CODE		ATBSN	ATBSN1	ATBSN2	ATBSN3	ATBSN4				
MOTOR MOUNT FOR ANGULATED CAD/CAM SCREW										
		TYPE	L (mm)	CODE						
		⊕ Ø1.7	24	MMAT						

INTERNAL HEX

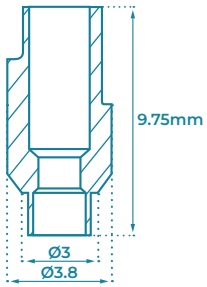
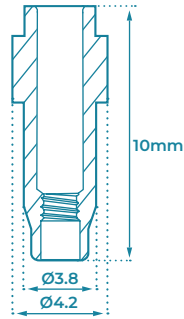
Cement-Retained

TITANIUM SCAN BODY

TYPE	Slim Platform - 2mm	Standard
-------------	------------------------	----------

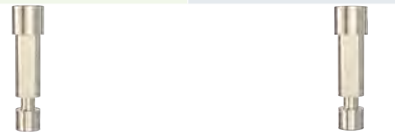


CODE	SBA-SL	SBATI
-------------	--------	-------

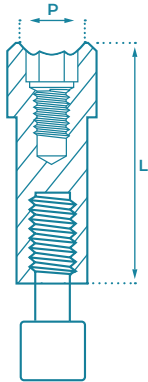


3D PRINTING ANALOG

TYPE	Slim Platform - 2mm	Standard
P	Ø3mm	Ø3.8mm
L	10mm	10mm



CODE	ANG3D-SL	ANG3D
-------------	----------	-------



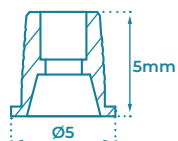
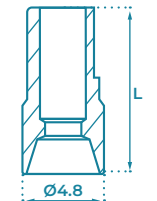
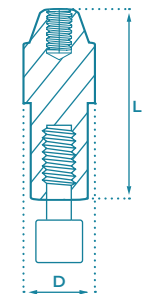
FOR SCREW-RETAINED RESTORATIONS

TYPE	MULTI-UNIT 1.6mm	MULTI-UNIT 1.4mm
-------------	------------------	------------------

3D PRINTING ANALOG		
	L 12mm D Ø4.8mm	L 9mm D Ø4.9mm
CODE	MU-ANG3D	NM-ANG3D

PEEK SCAN BODY				
	L 10mm	7mm	10mm	13mm
CODE	MU-SBA	NM-SB7	NM-SB10	NM-SB13

TITANIUM BASE		
	MU-SA Screw included MU-TBS	NM-SA Screw included NM-TBS
CODE	MU-TBS	NM-TBS



INTERNAL HEXAGON PEOSTHETICS

SCREW-RETAINED RESTORATION

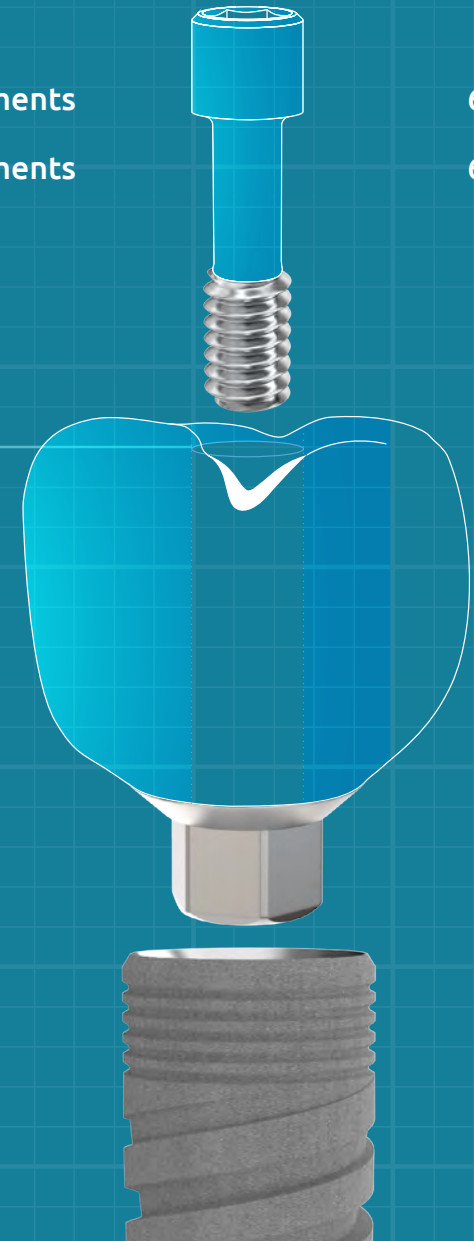
Multi Unit 1.6mm Abutments

62-63

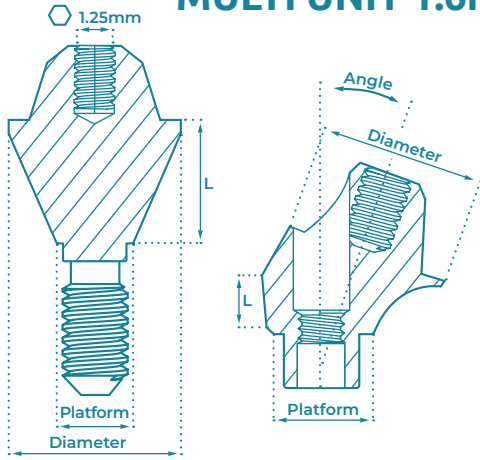
Multi Unit 1.4mm Abutments

64-66

SCREW ACCESS HOLE



MULTI UNIT 1.6mm ABUTMENTS



Our range of Multi-Unit 1.6mm abutments provides a selection of gingival heights and fits various implant angulation positions.

These Multi-unit abutments are suitable for both slim and standard implant platforms, ensuring compatibility with different implant systems.

- 1.6mm prosthetic connection.

MATERIAL:

Ti-6AL-4VELI (Titanium grade 5).

PACKAGED WITH:

Abutment Fixation Screw SA / SA-SL, and Abutment Handle (*Only with Angulated abutments)

TORQUE TIGHTENING:

35 Ncm for Abutments (Recommendation).
20 Ncm for Prosthetic Parts (Recommendation).

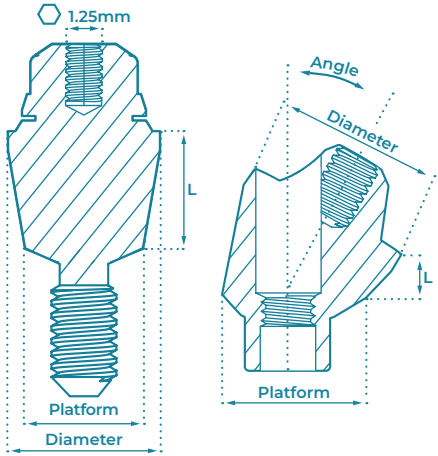
COMPONENTS

TITANIUM SLEEVE				PLASTIC SLEEVE				OPEN TRANSFER			
D	Ø4.8mm	L	12mm	D	Ø4.8mm	L	12mm	D	Ø5mm	L	15mm
MU-TSL				MU-PSL				MU-TOT			
MU-SA Screw is included				MU-SA Screw is included							
CLOSED TRANSFER				ANALOG				HEALING CAP			
D	Ø4.8mm	L	7.2mm	D	Ø4.8mm	L	13.5mm	D	Ø4.8mm	L	5.2mm
MU-TCT				MU-ANG				MU-HC			
MU-SA Screw is included								MU-SA Screw is included			
TITANIUM BASE				3D PRINTING ANALOG				SCAN BODY			
D	Ø5mm	L	4.8mm	D	Ø4.8mm	L	12mm	D	Ø4.8mm	L	10mm
MU-TBS				MU-ANG3D				MU-SBA			
MU-SA Screw is included								MU-SA Screw is included			
ABUTMENT HANDLE				FIXATION SCREW							
Premounted on angulated abutments				MU-SA							



SLIM 0°					Platform - Ø3mm	
					Diameter - Ø4.8mm	
L	1mm	2mm	3mm	4mm		
CODE	MU1-SL	MU2-SL	MU3-SL	MU4-SL		
STANDARD 0°					Platform - Ø3.8mm	
					Diameter - Ø4.8mm	
L	1mm	2mm	3mm	4mm	5mm	
CODE	MU1	MU2	MU3	MU4	MU5	
SLIM 17°		D - Ø3mm		ANGULATED 17°		Platform - Ø3.8mm
		D - Ø4.8mm				Diameter - Ø4.8mm
L	1mm	2mm	1mm	2mm	3mm	
CODE	MU-17-1-SL	MU-17-2-SL	MU-17-1	MU-17-2	MU-17-3	
SLIM 30°		D - Ø3mm		ANGULATED 30°		Platform - Ø3.8mm
		D - Ø4.8mm				Diameter - Ø4.8mm
L	1mm	2mm	1mm	2mm	3mm	
CODE	MU-30-1-SL	MU-30-2-SL	MU-30-1	MU-30-2	MU-30-3	
ANGULATED 45°					Platform - Ø3.8mm	
					Diameter - Ø4.8mm	
L	1mm					
CODE	MU-45-1					

MULTI UNIT 1.4mm ABUTMENTS



Our range of Multi-unit 1.4mm abutments provides a selection of gingival heights and fits various implant angulation positions.

These abutments feature an angle selection angle of up to 60°, enabling them to effectively address implant divergence of up to 120° in all directions, ensuring optimal parallel alignment.

They are suitable for a wide range of restorations, whether it involves a few teeth or a full-jaw restoration.

- 1.4mm prosthetic connection.

MATERIAL:
Ti-6AL-4VELI (Titanium grade 5).

PACKAGED WITH:

- Abutment Handle.
- Fixation Screw (**Only with Angulated abutments*).

TORQUE TIGHTENING:
35 Ncm for Abutments (Recommendation).
20 Ncm for Prosthetic Parts (Recommendation).

COMPONENTS

TITANIUM SLEEVE		PLASTIC SLEEVE		OPEN TRANSFER	
D	L	D	L	D	L
Ø4.9mm	12mm	Ø4.9mm	12mm	Ø4.9mm	16mm
NM-TSL		NM-PSL		NM-TOT	
NM-SA Screw is included		NM-SA Screw is included			
CLOSED TRANSFER		ANALOG		HEALING CAP	
D	L	D	L	D	L
Ø4.9mm	8mm	Ø4.9mm	18mm	Ø4.9mm	4.8mm
NM-TCT		NM-ANG		NM-HC	
NM-SA Screw is included				NM-SA Screw is included	
TITANIUM BASE		3D PRINTING ANALOG		SCAN BODY	
D	L	D	L	D	L
Ø4.9mm	4.5mm	Ø4.9mm	9mm	Ø4.9mm	7mm, 10mm, 13mm
NM-TBS		NM-ANG3D		NM-SB7, NM-SB10, NM-SB13	
NM-SA Screw is included				NM-SA Screw is included	
ABUTMENT HANDLE				FIXATION SCREW	
Premounted On Straight					
On Angulated				NM-SA	

SLIM 0°					Platform - Ø3mm Diameter - Ø4.9mm	
L	1mm	2mm	3mm	4mm	5mm	



STANDARD 0°					Platform - Ø3.8mm Diameter - Ø4.9mm	
L	1mm	2mm	3mm	4mm	5mm	



FOR STANDARD AND SLIM 0°			L (mm)	CODE
			6	NM-HD06

SLIM 17°		P - Ø3mm D - Ø4.9mm	ANGULATED 17°				Platform - Ø3.8mm Diameter - Ø4.9mm	
L	2mm	3mm	2mm	3mm	4mm	5mm		



SLIM 30°		P - Ø3mm D - Ø4.9mm	ANGULATED 30°				Platform - Ø3.8mm Diameter - Ø4.9mm	
L	2mm	3mm	2mm	3mm	4mm	5mm		



SLIM 45°		P - Ø3mm		ANGULATED 45°			Platform - Ø3.8mm	
		D - Ø4.9mm					Diameter - Ø4.9mm	
L	2mm	3mm	3mm	2mm	3mm	4mm	5mm	

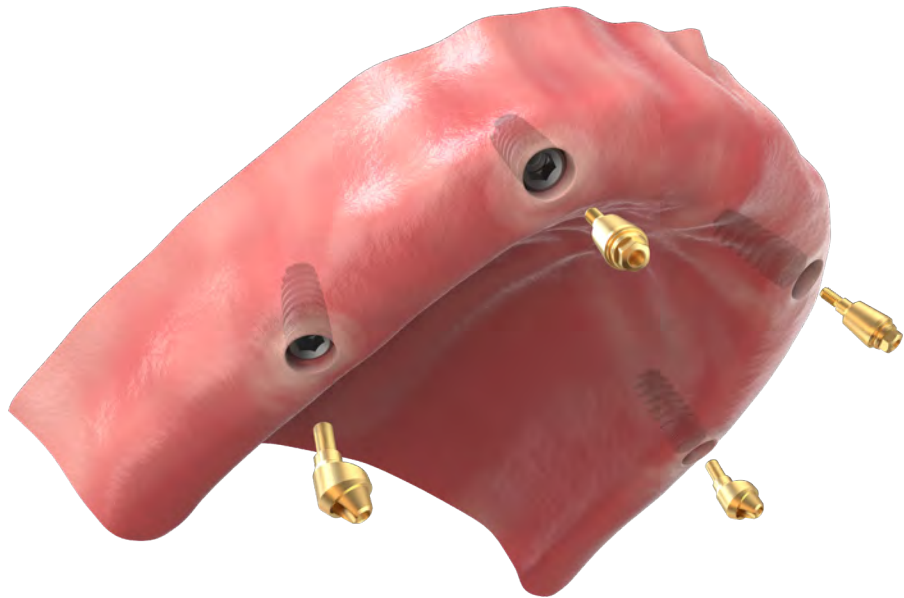


CODE	NM-45-2-SL	NM-45-3-SL	NM-45-2	NM-45-3	NM-45-4	NM-45-5
------	------------	------------	---------	---------	---------	---------

ANGULATED 52°		Platform - Ø3.8mm		ANGULATED 60°		Platform - Ø3.8mm	
		Diameter - Ø4.9mm				Diameter - Ø4.9mm	
L	2mm			2mm			



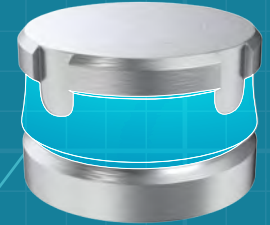
CODE	NM-52-2			NM-60-2		
------	---------	--	--	---------	--	--



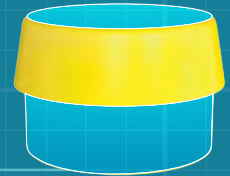
INTERNAL HEXAGON PEOSTHETICS

OVERDENTURE RESTORATION

- Ball Attachment 68-69
- Click Attachment 70-71
- GdtLoc Attachment 72-73



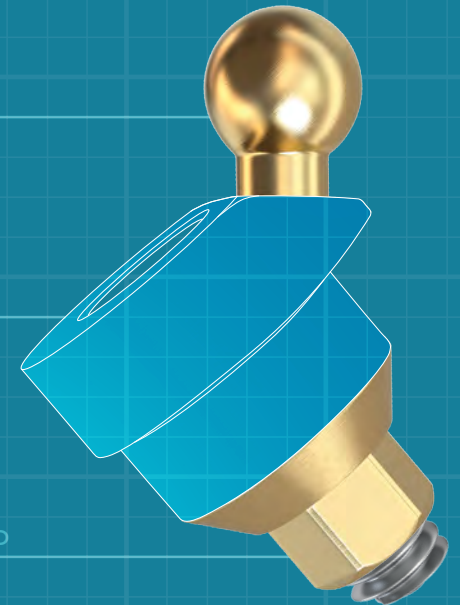
METAL HOUSING



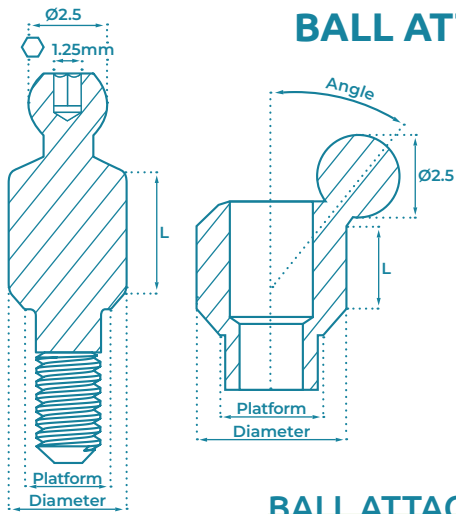
SILICONE CAP

2.5mm

TITANIUM GRADE 5 (TI-6AL-4V ELI)



STRAIGHT AND ANGULATED



BALL ATTACHMENT

Designed to provide a secure and stable connection between a denture and dental implants.

Consist of two components: a **male component**, which is a ball-shaped component that is placed on the implant, and a **female component**, which is a socket-shaped component that is placed on the denture.

The two components are then locked together, creating a secure connection.

MATERIAL:

Ti-6AL-4VELI (Titanium grade 5).

PACKAGED WITH:

Abutment Fixation Screw SA.

(*Only with Angulated abutments).

TORQUE TIGHTENING:

25 Ncm (Recommendation).

BALL ATTACHMENT PARTS

EXTRA SOFT SILICONE CAP		SOFT SILICONE CAP		STANDARD SILICONE CAP	
Retention	0.5 kg / 1.1 lbs	Retention	0.9 kg / 2 lbs	Retention	1.3 kg / 2.9 lbs



YELLOW

SYCB



PINK

SPCB



CLEAR

SWCB

LABORATORY USE SILICONE CAP		PROTECTIVE DISC		METAL HOUSING	
Retention	0 kg / lbs				



BLACK

SBCB



CLEAR

DPB



MTCB

ANALOG		IMPRESSION COPING TRANSFER	
--------	--	----------------------------	--



AFB



TFB



INSERTION AND EXTRACTION DRIVER

HCP



SLIM 0°					Platform - Ø3mm Diameter - Ø3.6mm	
L	1mm	2mm	3mm	4mm	5mm	6mm



CODE	BAT1-SL	BAT2-SL	BAT3-SL	BAT4-SL	BAT5-SL	BAT6-SL
------	---------	---------	---------	---------	---------	---------

STANDARD 0°							Platform - Ø3.8mm Diameter - Ø4mm	
L	0.5mm	1mm	2mm	3mm	4mm	5mm	6mm	7mm



CODE	BAT05	BAT1	BAT2	BAT3	BAT4	BAT5	BAT6	BAT7
------	-------	------	------	------	------	------	------	------

ANGULATED 18°			Platform - Ø3.8mm Diameter - Ø4.6mm	
L	1mm	2mm	3mm	



CODE	BAT-1810	BAT-1820	BAT-1830
------	----------	----------	----------

ANGULATED 30°			Platform - Ø3.8mm Diameter - Ø4.6mm	
L	1mm	2mm	3mm	



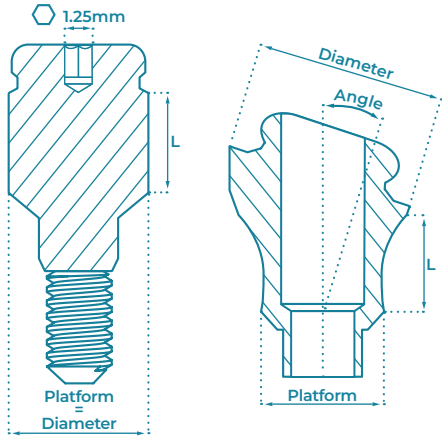
CODE	BAT-3010	BAT-3020	BAT-3030
------	----------	----------	----------

ANGULATED 40°			Platform - Ø3.8mm Diameter - Ø4.6mm	
L	1mm	2mm	3mm	



CODE	BAT-4010	BAT-4020	BAT-4030
------	----------	----------	----------

CLICK ATTACHMENT



Removable denture attachments system that provides a secure and stable connection between a denture and dental implants.

They consist of two components: a male component, which is placed on the implant and a female component, which is placed on the denture.

The two components are locked ("click") together, creating a secure connection.

MATERIAL:

Ti-6AL-4VELI (Titanium grade 5).

PACKAGED WITH:

Abutment Fixation Screw SA.
(*Only with Angulated abutments).

TORQUE TIGHTENING:

25 Ncm (Recommendation).

CLICK ATTACHMENT PARTS

EXTRA SOFT SILICONE CAP	SOFT SILICONE CAP	STANDARD SILICONE CAP
Retention 0.6 kg / 1.3 lbs	Retention 1.2 kg / 2.6 lbs	Retention 1.8 kg / 4.0 lbs
 YELLOW	 PINK	 CLEAR
SYCL	SPCL	SWCL
STRONG SILICONE CAP	LABORATORY USE SILICONE CAP	PROTECTIVE DISC
Retention 2.5 kg / 5.5 lbs	Retention 0 kg / lbs	
 PURPLE	 BLACK	 PINK
STCL	SBCL	DP
METAL HOUSING	ANALOG	IMPRESSION COPING TRANSFER
		
MTCL	AFL	TFL
INSERTION AND EXTRACTION DRIVER		
		HLC




SLIM 0°				Platform - Ø3mm Diameter - Ø4.1mm	
L	1mm	2mm	3mm	4mm	

				
CODE	LOC1-SL	LOC2-SL	LOC3-SL	LOC4-SL





STANDARD 0°					Platform - Ø3.8mm Diameter - Ø3.8mm	
L	1mm	2mm	3mm	4mm	5mm	6mm

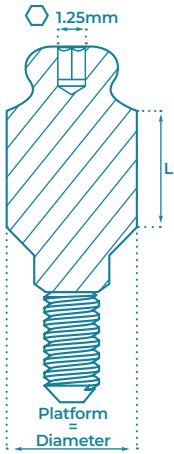
						
CODE	LOC1	LOC2	LOC3	LOC4	LOC5	LOC6

ANGULATED 18°				Platform - Ø3.8mm Diameter - Ø5.2mm	
L	0.5mm	1mm	2mm	3mm	

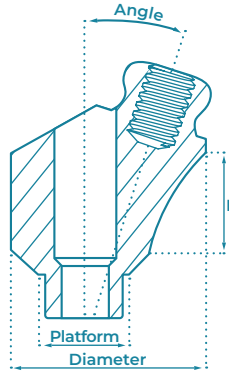
				
CODE	LOC-1805	LOC-1810	LOC-1820	LOC-1830

ANGULATED 30°				Platform - Ø3.8mm Diameter - Ø5.2mm	
L	0.5mm	1mm	2mm	3mm	

				
CODE	LOC-3005	LOC-3010	LOC-3020	LOC-3030



GDTLOC ATTACHMENT



Consist of two components: a male component, which is placed on the implant, and a female component, which is placed on the denture.

The metal housing together with the silicone caps creates a rotational mechanism pivoting ability. It allows a divergence of up to 30° of the implants and a more significant area of contact male and female components.

MATERIAL:
Ti-6AL-4VELI (Titanium grade 5).

PACKAGED WITH:
Abutment Fixation Screw SA, and Abutment Handle (*Only with Angulated Abutments).

TORQUE TIGHTENING:
25 Ncm (Recommendation).

GDTLOC ATTACHMENT PARTS

EXTRA SOFT SILICONE CAP	SOFT SILICONE CAP	STANDARD SILICONE CAP
Retention 0.6 kg / 1.3 lbs	Retention 1.2 kg / 2.6 lbs	Retention 1.8 kg / 4.5 lbs
 YELLOW	 PINK	 CLEAR
SYCG	SPCG	SWCG
STRONG SILICONE CAP	LABORATORY USE SILICONE CAP	PROTECTIVE DISC
Retention 2.7 kg / 5.5 lbs	Retention 0 kg / lbs	
 PURPLE	 BLACK	 PINK
STCG	SBCG	DPG
METAL HOUSING	ANALOG	IMPRESSION COPING TRANSFER
		
MTCG	AFE	TFL
INSERTION AND EXTRACTION DRIVER		
ABUTMENT HANDLE	Premounted on Angulated Abutments 	



0°						Platform - Ø3.8mm
						Diameter - Ø3.8mm
L	0.5mm	1mm	2mm	3mm	4mm	5mm



ANGULATED 18°				Platform - Ø3.8mm
				Diameter - Ø5.2mm
L	1mm	2mm	3mm	4mm



ANGULATED 30°				Platform - Ø3.8mm
				Diameter - Ø5.2mm
L	1mm	2mm	3mm	4mm

