

@ savetime@wonderfill.com

+1.254.772.4661
+0.808.1202.372
(International Customers)

Dental Creations, Ltd.
5015 Fort Avenue
Waco, TX 76710



dentalcreations Ltd.

www.wonderfill.com

OUR FUTURE

Leading the Dental Industry
with Innovation!

DO YOU HAVE PRODUCT IDEAS?

We can help make them
a reality.



TAKE A BITE OUT OF TIME
WITH THE **WONDER** PRODUCT LINE!



www.wonderfill.com

time•sav•er (tīm-sāvər) n.

1. WHEN YOU WORK SMART AND SAVE TIME
USING WONDERFILL TONGUE AND VOID FILLER,
WONDERPEG INSTANT FIRING SUPPORT,
WONDERADMIX BUBBLE BUSTER, AND ANY
OF THE AMAZING **WONDER** PRODUCT LINE.



dentalcreations Ltd.

MAKE BETTER MODELS IN LESS TIME WITH **wonderfill**.
— THE EZ IN & OUT TONGUE AND VOID FILLER!

FOR MODEL HEADACHES REACH FOR THE “PINK STUFF!”

Save up to 20 minutes!

- ⊕ Water-soluble & easy clean-up
- ⊕ No need to mix alginate filler
- ⊕ Eliminates grinding out stone from lower impressions
- ⊕ Holds up under heat when making heat-shrink retainers
- ⊕ Fills in bubbles, air pockets, missing teeth, & undercuts
- ⊕ Enhances the fit of appliances & bleaching trays
- ⊕ Excellent in creating a temporary dam when making partial molds

Just Compare —
approximate time to
make a model if using:

- Wonderfill
5 minutes
- Alginate
10 minutes
- Plaster/Stone
25 minutes



\$46.95

Net Wt. 1.13 kg
Item #344



Wonderfill Instructions - For Tongue Filler

1. Form a domed bridge in the tongue area.
2. With Wonderfill in the tongue area, pour plaster/stone.
3. After plaster/stone fully sets, pop out non-sticky Wonderfill.
4. Using only water & a brush, remove the slight residue that might remain.



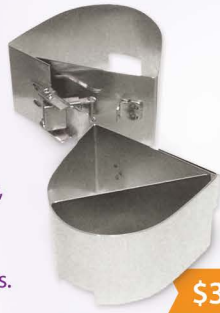
For Bleaching Tray

1. Use Wonderfill to block out area to be bleached.
2. Directly apply Wonderfreeze to vacuum forming material.
3. Remove Wonderfill. Ready to use!

wonderformer

**No mixing! No mess!
No wax products!**

- ⌚ Works with ALL laboratory, orthodontic, & general dentistry applications.
- ⌚ Works with ANY casting material, stone, silicone, & rubber-based products.
- ⌚ Takes less than 5 minutes to complete. Research shows this process saves an average of 25 minutes per model.



\$39.95

Item #400

Wonderformer is a one size fits all, stainless steel, forming mold that includes a release clip for quick removal of the cast model. It can be spread open widely when needed for an extra large casting model. It is also sold with a stainless steel divider insert used for pouring partial molds.

TAKE YOUR TIME BACK

MAKE BETTER MOLDS IN LESS TIME WITH WONDERFILL + WONDERFORMER

THE NEW AND IMPROVED BOX & POUR PROCESS

Conventional boxing and beading of impressions is a tedious technique that must be performed to complement and maintain the clinical efforts to impress border depth and thickness (border mold), and transfer those dimensions to a master model. Inversion of the impression in this technique also ensures the stone poured into the boxed area is intimate to the impression by means of gravity.

The common, time-intensive technique uses rope wax, sticky wax, and boxing wax to establish a land area, imitate sulcus, and a box to hold the stone pour together. The technique balances on the adhesion tenacity of the wax to the impression material, as well as the speed and dexterity of the technician in using and melting multiple waxes together to fabricate a "sealed" box into which lab stone is poured. Generally it takes about 20-30 minutes to prepare using the conventional wax method.

Wonderformer when used with Wonderfill becomes an accurate, cost effective, time saving "system" for fabricating boxed impressions. The form is a latching metal box or former which, when used like a cookie cutter along with Wonderfill, boxes an impression that is ready to pour in 5 minutes.

The conventional method for 11 models based on 25 minutes each is about 4 hours.

The "Wonder" method for 11 models based on 5 minutes each is about 55 minutes.

THE TECHNIQUE:

01 After sterilizing the impressions, mark the impression borders of 3-4 mm (Fig. B).

02 Make a patty of Wonderfill on a 5 x 5 plexi or similar approximately 1" thick and wider than form/10 oz.

03 Press the impression into Wonderfill up to the marked borders with the ridge parallel to the floor (Fig. C).

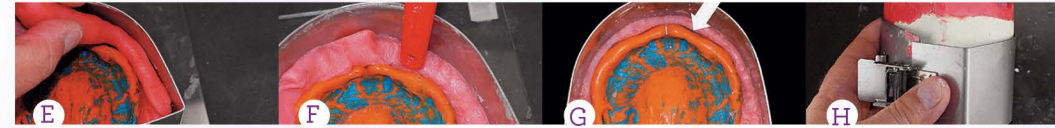


A Scaling up to produce multiple boxed models consumes minutes instead of hours.

B Pre-marking the depth of the sulcus to ensure adequate replication.

C The Wonderfill should be 1.5-2 inches thick and wider than the Wonderformer.

D Semi and totally unlatching the Wonderformer will provide for wider impressions.



E Use excess material to backfill.

F A brush handle is suitable to tamp Wonderfill into place.

G Ensuring adaptation to the impression, the Wonderformer, & controlling the junction of the land area to sulcus adaptation.

H After the model has been poured and allowed to harden, remove it from the Wonderformer.



I Final trimming is accomplished with model trimmer to define model dimensions, and a razor knife to smooth land areas.

J The model should be 15-16 mm at its thinnest point.

K The width of the land area should be 3-4 mm.

L The uniform sulcus depth of 2-3 mm.

04 Position the Wonderformer centered over impression and press down in a cookie cutter fashion (Fig. D).

05 Peel away excess material and use it to backfill any areas that may have pulled away from the sides of the impression or form (Fig. E).

06 Tamp the Wonderfill flat and up to the marked border line. A toothbrush handle works well for this (Figs. F and G).

07 Lift and place the entire base and form on a vibrator, fill with your stone of choice and allow to harden.

08 Once the stone is set, unlatch the Wonderformer, separate the Wonderformer and Wonderfill from the impression, and pull off any Wonderfill still adhering to the stone. Wonderfill will prevent full drying of the stone (land areas), so after removing Wonderfill then allow another 15 minutes for the model to cure. Use a model dryer for faster results. Practice Tip: Do not leave boxed and poured impressions made with Wonderfill longer than time for stone to set up and do not allow to stand overnight in the Wonderformer (Fig. H).

09 Wash off any remaining Wonderfill on the model surface. It's water soluble and non-staining making this simple to accomplish before trimming the models to width and thickness specifications using a trimmer and knife (Fig. I).

10 The completed model displays border definition and detail (Fig. L). This technique makes it simple to create master models with proper dimensions including a width of 15-16 mm at its thinnest point, a land area width of 3-4 mm and a uniform 2-3 mm sulcus depth (Figs. J, K and L).

For a video demonstrating this technique visit: bit.ly/TomZale

COMPLETE SET

\$49.95

Item #410



wonderortho formers

Take the daily grind out of preparing study models! The stainless steel Wonderortho Formers were designed to provide accurate upper and lower study models. This time saving product generates flawless, symmetrical, study models that require little trimming.

LEAVE A LASTING IMPRESSION WITH YOUR TOUCH. GET SILKY SMOOTH HANDS WITH **wondersoft** ALOE VERA LOTION!

A TOUCH TO REMEMBER

88% Aloe Vera

- Softens skin & relieves dryness
- Non-greasy & will not stain
- Petroleum & lanolin free
- Latex compatible

\$24.95

16 oz bottle
Item #170

"A little dab will do!"



FIGHT BUBBLES & MAKE PERFECT MODELS WITH **wonderadmix** BUBBLE BUSTER!

IT'S BUBBLE BUSTING TIME!

No more spray on debubblizers!

- Creates a smoother stone
- Increases strength, hardness, & density
- Prevents chipping & fractures
- Controls shrinkage & expansion
- Causes greater accuracy & fine margins

Starting At

\$???.??

1.5 gl kit (200 uses)
6-20cc syringes
Item #???

\$???.??
3.0 gl refill kit (no bottle)
12-20cc syringes
Item #???

\$???.??
3.0 gl kit (400 uses)
12-20cc syringes
Item #???



HOLD THOSE CROWNS IN PLACE WITH
wonderpeg INSTANT FIRING SUPPORT!

BAD CROWN DAY?

\$6.50 each

min. order of 5
10cc syringe
Item #2010

For use with Emax and Lava crowns!

- ✦ No pre-drying time!
- ✦ Zero firing distortion
- ✦ Does not contaminate
- ✦ For temperatures from 400°C – 1300°C



Example with a crown

1. Using the Wonderpeg syringe, simply fill the crown, jacket, or veneer; no drying time is necessary.
2. The crown, jacket, or veneer is easily balanced on the ceramic peg and does not tilt during the firing. Wonderpeg offers zero firing distortion for temperatures from 400° C to 1300° C.
3. Simply remove with a slight twist from the ceramic peg after firing and tap off any residual Wonderpeg material.

Example with a veneer



HOLD CROWNS, VENEERS, & SMALL CASTINGS
IN PLACE WITH **wondergel**!

RESTORE WITH EASE

Easy to use!

- ◆ Like having an extra helping hand
- ◆ Easier to handle small & loose fitting restorations
- ◆ Eliminates risk of contamination
- ◆ Water-soluble



\$12.95

3cc syringe
Approx. 225 uses
Item #140



Wondergel Instructions

1. Place a small amount of Wondergel inside the restoration.
2. Place restoration on die. (If excess gel is squeezed out at the marginal area, hold restoration with the finger and use air pressure to blow excess down and away from the margin.
3. Restoration is ready to build-up or contour. (It is not recommended to remove gel prior to firing.)
4. Easily remove restoration from die.

WHEN YOU NEED A SECURE HOLD USE
wonderpinz DOWEL PINS!

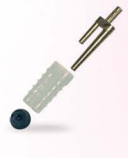
PURE PINNING POWER



Single Dowel Pins with Plastic Sleeves & Rubber Caps

- Precise fitting
- Diamond shape prevents bending, rotation, & movement
- Slim pin excellent for anteriors

\$109.95 Box set of 1000
Item #705



Double Twin Pins with Plastic Sleeves & Rubber Caps

- Precise fitting
- No distortion
- Added durability & reinforced pins
- Die guards for added stability
- Slides in & out of model easily & securely

\$112.95 Box set of 1000
Item #715



Double Twin Pins with Metal Sleeves & Rubber Caps

- Precise fitting
- No distortion
- Added durability & reinforced pins
- Die guards for added stability
- Slides in & out of model easily & securely

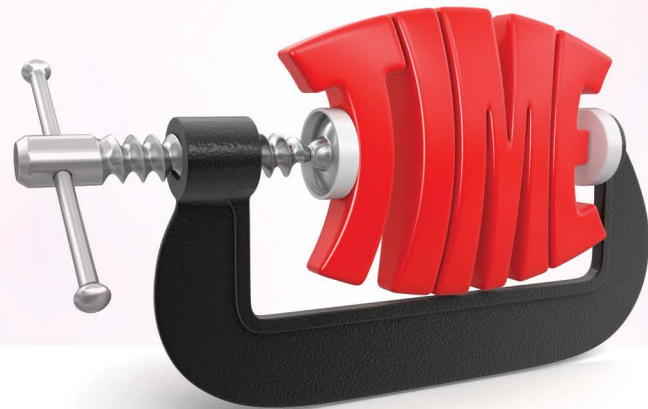
\$114.95 Box set of 1000
Item #710



Double Dowel Pins with Metal Sleeves & Rubber Caps

- Precise Fitting
- No distortion
- Strong retention
- Easily used with pindex machines

\$112.95 Box set of 1000
Item #720



COOL DOWN INSTANTLY WITH **wonderfreeze**
MULTI-PURPOSE COOLING SPRAY!

TAKE CONTROL OF THE COOLING POWER

Wonderfreeze Uses

- Cooling vacuum formed materials
- Cooling denture teeth, wax areas, & metal finishings
- Cooling crown work
- Cooling orthodontic wire
- Removing sticky wax

\$19.95

Net Wt. 10 oz/283 g
Approx. Vol 234 ml
Item #130



CLEAN WITH EASE WHILE SAVING TIME
 THANKS TO **dr.detox**
 IONIC SPONGE OVEN CLEANER!

CLEANING MADE SIMPLY AMAZING

COMPLETE KIT

\$49.95

Formula 1 & 2
 Net Wt. 1/2 lb, 236 g (each)
 Item #200

\$27.95
 Formula 1
 Net Wt. 1/2 lb, 236 g
 Item #201

\$11.95
 Formula 2
 Net Wt. 1/2 lb, 236 g
 Item #202



No vacuum needed!

- Eliminates greenening, discoloration, & bubbling in porcelain restorations.
- Extends the muffle & the thermocouple life because there is no longer a need to take the muffle to high temperatures when cleaning the oven as with old-fashioned carbon products.
- Maintains the thermocouple accuracy by removing the ions of various metals that stick to the thermocouple & distort temperatures.

Formula Removes

Formula 1

Silver Ag
 Palladium Pd
 Copper Cu
 Cobalt Co

Formula 2

Aluminum Al
 Barium Ba
 Beryllium Be
 Calcium Ca

Carbon C
 Cadmium Cd
 Cesium Cs
 Chromium Cr

Iron Fe
 Lithium Li
 Magnesium Mg
 Mercury Hg

Potassium K
 Rubidium Rb
 Sodium Na
 Strontium Sr
 Zinc Zn

Dr. Detox Instructions

- Use no vacuum!
- Use only one Dr. Detox Formula (material) at a time.
- Fill provided crucible near the top with Dr. Detox Formula 1 or Dr. Detox Formula 2 material.
- Place the crucible on the oven table.
- Be sure the oven temperature is below 400° C / 800° F.
- Pre-heat the oven for 3 minutes by increasing the temperature at the rate of 40° C / 65° F per minute to a high temperature of 700° C / 1300° F.
- Hold the oven temperature at 700° C / 1300° F for 5 minutes.
- Cool the oven for 3 minutes.
- Discard Dr. Detox material after each use.

GIVE YOUR DENTAL STONES & PLASTERS
 A PROFESSIONAL HIGH SHINE LUSTER WITH
wondergloss MODEL SHINE!

A SHINE SO BRIGHT, YOU GOTTA WEAR SHADES



"Wondergloss is not a dip or a model soap!"

\$27.95

32 fl oz, 946 ml
 Item #150



Get that professional shine!

- Prevents staining & chipping of models
- Works on all dental stones & plasters
- Only adds less than (1) micron of thickness to the stone or plaster so accuracy & quality are maintained

Visit our website for FREE samples! wonderfill.com / 1.254.772.4661

FIRE WORRY FREE WITH **wondertray**
THE NON-STICK, FIBER-FREE TRAY LINER!

MASTER THE ART OF FIRING

Lasts for Multiple Firings!

- For porcelain firing, use as a non-stick tray liner without pins, & pegs.
- Works with any type of firing tray.
- Can be used with or without a tray.
- Can be cut to your desired size.
- Lasts for multiple firings.
- Thermal shock & chemical resistant, keeps porcelain free of discoloration.
- Perfect for all firing cycles, including as a glazing pad.



\$13.95

Pack of 5
Item #110

HOLD YOUR FIRINGS IN PLACE WITH
THE **honeycomb firing tray!**

EXPECT BEE-UTIFUL RESULTS



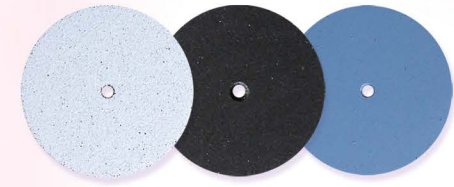
\$19.95

Includes 20 stainless steel pins
Item #100



ACHIEVE THE FINEST POLISH WITH
wonderwheelz SILICONE RUBBER WHEELS!

BE PROUD OF YOUR POLISH



BEST DEAL!

\$49.95

Box of 100
Blue / Item #501
Black / Item #502
White / Item #503

Box of 20 – \$14.95
Blue / Item #511
Black / Item #512
White / Item #513

White Silicone Wheel
Course – for reducing & smoothing
Size: 22 x 3.15 mm / 7/8" x 1/8"

Black Silicone Wheel
Medium – for smoothing
Size: 22 x 3.15 mm / 7/8" x 1/8"

Blue Silicone Wheel
Fine – for high luster polishing
Size: 22 x 3.15 mm / 7/8" x 1/8"

Use only the finest grade of silicone!

- For Pre-Polishing Porcelains & Metals
- Very Flexible
- Adapt to Contours
- Long Lasting
- Cost Effective

diamond impregnated rubber wheelz

\$48.95

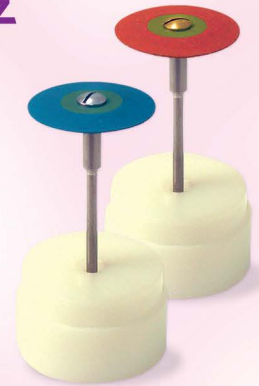
Each

Red Diamond
Item #515

Blue Diamond
Item #516

Red Diamond Impregnated Rubber Wheel
Coarse – for cutting & abrading zirconia, porcelain, lithium disilicate, metals, & hard materials.
Size: 26mm x 2mm 7/8"
Recommended speed is 8,000-12,000 rpm

Blue Diamond Impregnated Rubber Wheel
Medium – for removing deep scratches & smoothing the surface of zirconia, lithium disilicate, porcelain, metals, & hard materials.
Size: 26mm x 2mm 7/8"
Recommended speed is 8,000-12,000 rpm



CAST LIKE A PRO WITH **wonderbrite crucible!**

QUALITY CASTING

\$16.95

Hooded quartz crucible
Item #120

Slotted quartz crucible
Item #125



High Quality Design!

- Fits any standard type Kerr & Emesco casting machines
- 100% Quartz
- Non-contaminating
- Extra heavy duty

PROVIDE STABILITY AND ALLOW FOR CLOSE PLACEMENT
perfectpegs CERAMIC FIRING PEGS

GET FIRED UP!

Perfect Pegs Advantages

- Excellent for use with Emax and Zirconia restorations
- Allow close placement for crowns & bridges
- Provide stability
- Can be fired up to 2200°
- Come in 3 different shapes



For Small Anteriors
/ Small Bicuspids

\$25.95

Pack of 6
Item #112



For Small Molars

\$25.95

Pack of 6
Item #114



For Large Molars
/ Large Bicuspids

\$25.95

Pack of 6
Item #116

\$44.95

Set of 12
Item #119

Assortment

- For Small Anteriors / Small Bicuspids (4 ea.)
- For Small Molars (4 ea.)
- For Large Molars / Large Bicuspids (4 ea.)

wonder z-ring kit RADIANT HEAT FIRING SYSTEM

WORK SMART

- 🕒 Eliminates cold zones on firing tray
- 🕒 Optimizes the optical refraction (depth of shade vitality)
- 🕒 Completely even heat across the tray surface
- 🕒 Eliminates dull glaze finishes (fire scale) caused by uneven temperature in firing zone
- 🕒 Adjustable ring accommodates larger cases



Heat Pattern with Wonder Z-Ring



Wonder Z-Ring creates an even heat distribution across the firing tray which provides for perfectly glazed restorations regardless of where they are placed on the tray.

Uneven Heat Pattern in Standard Muffle Chamber

The spaces between the coils create vertical cold zones creating uneven heating across the tray surface (horizontally).



\$69.95

Item #101

Kit Includes:

- 1 honeycomb firing tray
- 20 stainless steel pins
- 3 fiber free firing trays
- 1 adjustable radiant heat ring



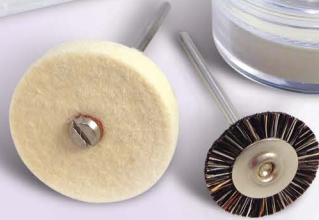
z-shine DIAMOND POLISH KIT

SAVE TIME



\$54.95

Item #800



- 🕒 High luster polish
- 🕒 30 seconds or less polish time
- 🕒 Easy clean up (20 second clean up)
- 🕒 Use with any restoration material
- 🕒 Especially designed for e.max & Lava crowns

Kit Includes:

- 5 grams of diamond polish
- #11 Soft Brush Wheel
- 1"x 1/8" Felt Wheel



bristle brushes

High quality natural bristle brushes ideal for polishing e.max, Lava and full contour zirconia restorations, as well as for polishing precious and non-precious alloys.

Box of 12

\$10.95

Item #530

Box of 144

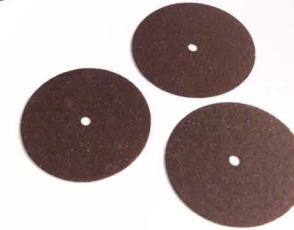
\$95.95

Item #531

z-discs ABRASIVE CUT-OFF & FINISHING DISCS



CUT DOWN ON YOUR PREP TIME



Box of 25

\$19.95

Item #551

sassy silicone MIXING CUPS

IDEAL FOR PREMIXING ACRYLIC!



\$11.95

Large
Item #776

\$7.50

Medium
Item #775

- 🕒 Acrylic non-stick cups made of a special silicone rubber surface adaptable for dental acrylics, resins and cements.
- 🕒 Wide suction-cup base prevents spillage and allows for instant removal of congealed acrylic.
- 🕒 Resistant to high temperatures.

wondertech articulators
FUNCTION LIKE A METAL ARTICULATOR!
**WORK SMARTER,
NOT HARDER!**



Large Articulators

BOX OF 50
(UNASSEMBLED –
SCREWS SOLD SEPARATELY)

\$64.95

Item #426

**Wondertech Articulators
Advantages**

- 🕒 Affordable & disposable
- 🕒 Light weight & easily adjustable
- 🕒 Made of durable ABS plastic
- 🕒 Provide stable mounting



Small Articulators

BOX OF 50
(UNASSEMBLED
– SCREWS SOLD SEPARATELY)

\$57.95

Item #425

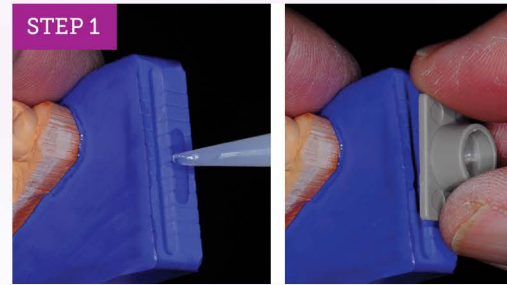


Screws & Screw Tap

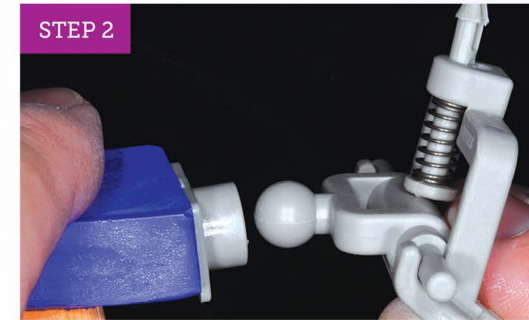
BOX OF 50

\$21.95

Item #427



- Apply small amount of adhesive to model base.
- Center ball receiver on upper model and hold in place until glue dries.



- Snap ball joint into ball receiver.
- This will connect the upper model, ball receiver and articulator base as one unit.



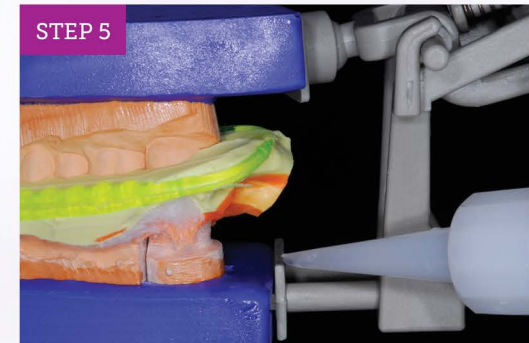
- Ball joint and assembly joined and upper model assembled.



- Slide lower arm assembly into articulator base.



- Place bite or triple tray onto model and set bite.



- Place lower assembly into place.
- The articulator will move around through the ball joint to aid in articulation.
- Set lower assembly into lower model and glue lower assembly onto lower model.
- Apply glue around entire lower assembly.



- Glue upper ball joint together.
- Use an accelerator to help set the glue.



- Glue lower assembly onto articulator base.

wondertech SILICONE BASE FORMERS

SO EASY TO USE!



Wondertech Silicone Base Formers are made from silicone rubber. Easy to use – simply pour stone, level off the stone, and then place the teeth cast on the form. They are reusable. They come in a set of 5 per box – Small Full Arch, Medium Full Arch, Large Full Arch, Right and Left Quadrants.

Box of 5

\$27.95

Item #430

stax plus kit THE KING OF
PORCELAIN MODELING LIQUIDS



HAVE A GREAT
CROWN DAY!

- 🕒 Eliminates wet porcelain “slumping” during building and handling
- 🕒 Reduces buildup time by 25% with no change in technique
- 🕒 Self-condenses minimizing the “tap /blot” condensing process
- 🕒 Units fire clearer than with plain water for optimum depth of shade
- 🕒 Superior modeling for laterally segmented buildups
- 🕒 Reduces firing shrinkage by approximately 50%
- 🕒 Universal use for low and high fusing porcelains
- 🕒 Eliminates steam tears and margin lifts



\$59.95

(1) 16oz / 480ml bottle
(1) 2 oz / 59ml bottle
Item #151

Stax Plus is a universal modeling liquid for both low and high fusing porcelains including lithium di silicate and Yz layering porcelains. It eliminates slumping, reduces build up time by 25%, maximizes shade results, reduces firing shrinkage by 50%, and eliminates steam tears and margin lifts making it “The King of Porcelain Modeling Liquids.”

ez partial fix DENTURE REPAIR KIT

A SMART SOLUTION FOR REPAIRS!



EZ Partial Fix Advantages

- ⌚ Saves time
- ⌚ Cost effective
- ⌚ Easy to use
- ⌚ No need to solder or weld
- ⌚ Can be used chair side

\$99.95

Approximatley
10 uses per kit

Item #900

Cast partial repairs are a common task in many dental labs. Patients wearing these partials often loose supporting teeth. Clasps and extrusions break from adjustments or simply from metal fatigue. Lab technicians add retention for teeth and add wrought wire clasps in a variety of methods. Sometimes there is sufficient acrylic base where wires can be embedded. Occasionally silver solder can be used for repairs, but this usually involves replacing all the teeth. Laser and phaser welding are an excellent method to add retention and clasps. Unfortunately, not every lab has access to these expensive welders.



The Partial Fix Technique describes an alternative, economical method to repair many types of cast partials.

In this picture, the lower cast partial needs new teeth to replace #22 and #31 and needs clasps for #23 and #32. However, the partial still fits the patient well. An economical solution to repair this partial would be ideal.

Repairs demonstrated on the next page are made using the Partial Fix Denture Repair Kit from Dental Creations, Ltd. This kit comes with an assortment of bolts, nuts, washer strings, and wires. Clasp and retention wires are already attached to washers and nuts. Bolt heads have a low profile that can be reduced even more if needed. A .050 hex driver is included to facilitate tightening. The kit contains parts for approximately 10 repairs.



Step 1:
To begin the repair, the old clasp which engaged the now missing tooth #22 is removed.



Step 2:
A flat surface is prepared on the lingual plate using a large carbide burr. Then a #4 carbide burr is used to drill a hole.



Step 3:
The hole is then enlarged using a tapered carbide drill.



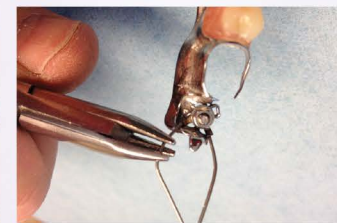
Step 4:
Fixation bolts, nuts, and washers with an attached clasp wire are selected.



Step 5:
These are attached using a .050 hex driver. Note the low profile of the bolt head.



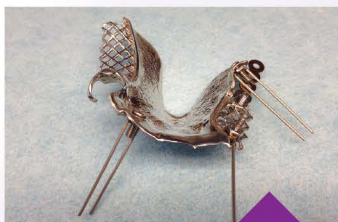
Step 6: Three point clasp pliers are used to bend the clasp into the desired position. A retention loop is then made to support the new denture tooth.



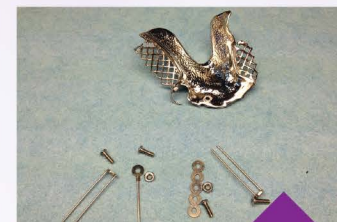
Step 7: Clasp wires are bolted to the mesh saddle area and then bent into position.



Step 8: The partial is then seated back onto the model. New denture teeth are replaced using acrylic resin. If needed, bolt heads can be adjusted to an even lower profile.



Other types of repairs or modifications are possible using this kit in different combinations as shown above. Still another application of this system (not illustrated) is for the restoring dentist to add these to partials and apply composite intra-orally.



The above picture shows a clasp and retention loop added to the lingual plate and a clasp added by bolting it to the cast mesh. Mesh is replaced by attaching a washer strip to the remaining mesh and a bolt with loops in the molar area.

The EZ Partial Fix Denture Repair Kit - A Smart Solution for Repairs!