

A SYSTEM AS **UNIQUE**
AS YOUR **PATIENTS** ARE



FREE!

3D DIAGNOSIS

- View DICOM, STL, OBJ, PLY and project files
- Obtain MPR, panoramic and 3D reconstruction
- Process and superimpose STL files to the DICOM dataset
- Trace nerves and set the teeth position
- Share projects and chat with your colleagues
- Open connection with other software packages like digital smile systems and with dental hardware such as CBCT machines and scanners (intra-oral, desktop, face)



- Plan implants with the tip of your finger
- Manage the projects in mobility
- Bring your Patients everywhere

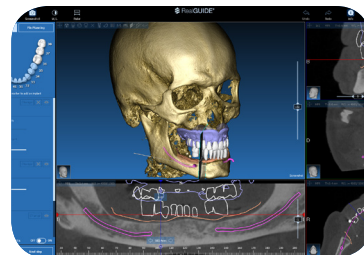
- Download your preferred library from the cloud
- Choose between hundreds of implants and prosthetic components
- Set your favorite windows layout for optimal planning
- Implant libraries officially released by the Companies, with defined relationships between implants, abutments and sleeves
- Artificial intelligence based teeth and bone segmentation



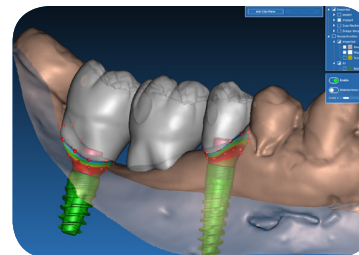
IMPLANTS PLANNING



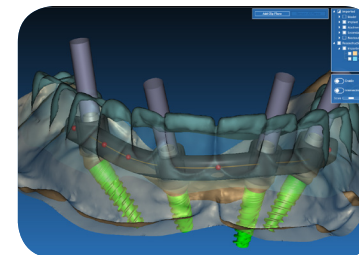
RealBODY 3D engine



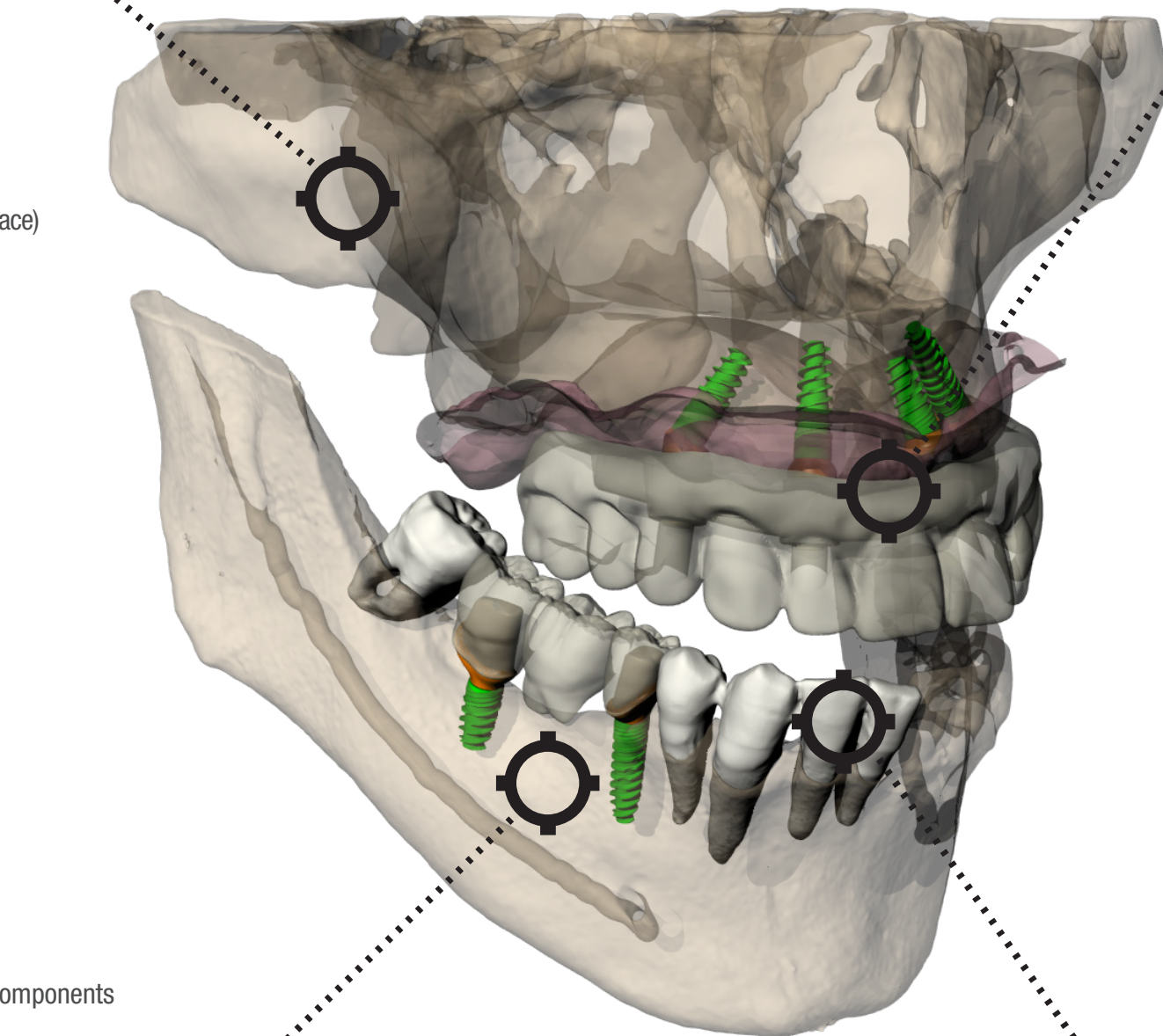
DICOM & STL visualization



Bridge modelling



Immediate loading



PROSTHESIS DESIGN



- Create wax-up from library or anatomy
- Design crown and bridges on teeth or implants
- Create immediate loading prosthesis from the implant planning in a single, integrated environment
- Create reinforcement bars in a few clicks
- Design custom abutments on implants or scanned Ti-Basis with anatomic or reduced overstructures
- Digital cut back on crowns, bridges and wax-up elements
- Easy telescopic crowns, bridges and bar construction
- Create overstructures on single or multiple bars with a flexible workflow

- Complete integrated system including implants planning, surgical guides and prosthesis modelling
- Immediate loading management: from the wax-up to the definitive prosthesis
- The only solution involving the full digital dentistry Team through CLOUD and mobile technology

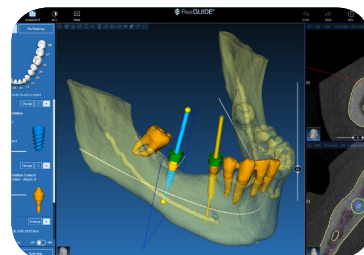


- Design any type of guide, supported by bone, teeth or mucosa
- Fix, decimate, straighten the borders of STL files from optical scanners
- Create models or shells with implant analogues holes
- Perform any boolean operation on the segmented anatomy
- Export STL files optimized for 3D printing or milling

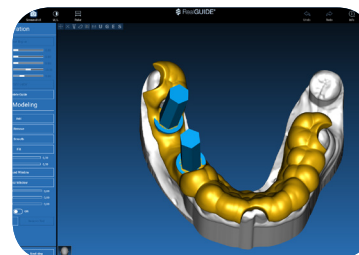
SURGICAL GUIDE DESIGN



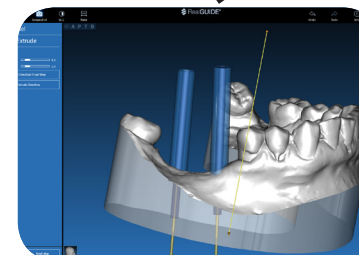
Full library from Implant Companies



Advanced segmentation



Surgical guide design



Model design



RealGUIDE START	RealGUIDE APP	RealGUIDE PRO	RealGUIDE DESIGN	RealGUIDE CAD+
Cloud communication platform for Doctors and Technicians	3D diagnosis and implants planning on the mobile platform (iOS)	Advanced 3D diagnosis and implants planning	3D diagnosis, implants planning and surgical guides modelling	3D diagnosis, implants planning, surgical guides and prosthesis modelling complete platform
DICOM, STL, images and PDF files importing and visualization	Starting from a project saved on START/PRO/DESIGN module	All the START license functions and ...	All the PRO license functions and ...	All the DESIGN license functions and ...
5 Patients CLOUD archive space	20 Patients CLOUD archive space (expandable)	50 Patients CLOUD archive space (expandable)	100 Patients CLOUD archive space (expandable)	Completely open system importing .STL, .OFF, .OBJ and .PLY files
Projects sharing through the CLOUD with other users (with any license type) and CHAT communication	Patients database, notifications and communication management on iPad/iPhone	Anatomy regions advanced segmentation starting from DICOM files	Surgical guides modelling starting from the planned implants	Immediate load provisional prosthesis modelling (including the reinforcing bar) directly based on planning data using adequate prosthesis scans, scanned functional wax-up and digital mock-up
Dynamic multiplanar reconstruction (MPR) and 3D visualization (high definition volume rendering)	2D/3D data visualization on iPad/iPhone	Teeth semi-automatic segmentation	Models with planned implants analogues holes creation	Egg shell provisional crowns modelling directly based on planning data; including relining positioning wings and definitive soft tissue healing custom abutment
DICOM/STL objects orientation, cutting and editing	Implants planning from the CLOUD library	Segmented anatomy export in STL format	STL files processing (remesh, holes filling, borders straightening)	Implant custom abutments, occlusal screwed crowns and bridges over Ti base scans or over scan abutments detection. Contextual construction of crowns and bridges overstructures based on dental anatomy libraries, wax-up scans or diagnostic mock-ups with full/partial layering shrink and virtual cut-back option
STL/DICOM files best fit superposition management	Patient's communication ideal tool	Virtual wax-up modelling	Individual trays modelling	Digital mock-up construction over residual dentition, implants or bar, with and without gingiva
Panoramic curve and mandibular nerve channel drawing	Subscription available on the AppStore®	Implants and prosthetic components planning	Free-form modelling tools applicable to any imported STL file	Overpressed structure and overstructure construction
		Project custom report export in PDF format	Model, surgical guides and implants with assembled scan abutments exporting in STL format for the independent production through RP or CAD/CAM technologies	Generation of profiled bars with free-form modelling, addition/subtraction of clip seats, attachments and locators option
				Telescopic crowns and bridges primary structure construction with complete anatomy information
				Oriented STL files export (including curve and axes description file) for the direct management in CAM applications
				Millbox® direct connection

AppStore® is a registered trademark of Apple Inc.
Millbox® is a registered trademark of CIMSystem Srl

