

WWW.GNIORTHO.COM

T. +82 505 600 8880 F. +82 505 333 8880 E. ceo@gniortho.com

BRACKET

AESTHETIC SERIES

Active Ceramic Self-ligating Bracket
Passive Ceramic Self-ligating Bracket
Sapphire Bracket
Ceramic Bracket
Resin Bracket

METAL SERIES

Active Metal Self-ligating Bracket
Passive Metal Self-ligating Bracket
Metal Mini Bracket



ARCHWIRES & SPRINGS

ARCHWIRES

Super Elastic NITI Archwire
Thermal Active NITI Archwire
Stainless Steel Archwire
Reverse Curve NITI Archwire
Coated Archwire

SPRINGS

NITI Springs
Close Spring With Eye-let
Stainless Steel Ligature Ties
Stainless Steel Kobayashi Ties



MINI SCREW

SMART ANCHOR

Mini Screws
IZ Screws
Contra-angle Manual Handpiece



TUBES

WELDABLE BUCCAL TUBES

- 1st Molar
 - Single tubes
 - Double combination tubes
 - Double rectangular tubes
 - Triple tubes
- 2nd Molar
 - Single tubes

BONDABLE BUCCAL TUBES

- 1st Molar
 - Single tubes 1G&4G
 - Double combination tubes
 - Double rectangular tubes
 - Triple tubes
- 2nd Molar
 - Single tubes 1G&4G
 - Other Tubes



BANDS

BANDS

Bicuspid bands
1st molar bands M series
1st molar bands G series
2nd molar bands



BANDS WITH TUBES

Bicuspid band pre-welded with brackets
1st molar M series band pre-welded with tubes

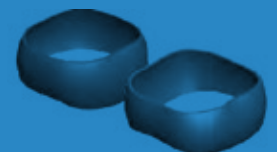
- single tubes
- double combination tubes
- double rectangular tubes
- triple tubes

 1st molar G series band pre-welded with tubes

- single tubes
- double combination tubes
- double rectangular tubes
- triple tubes

 2nd molar band pre-welded with tubes

- pre-welded with single tubes



ORAL CAVITY

Inside oral cavity
Outside oral cavity



ELASTIC RINGS

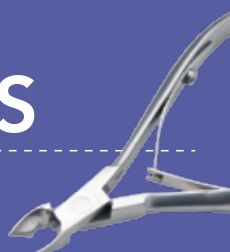
ELASTIC-RING

Ligature tie
Power chain
Separators
O-rings
Torsion pad
Ligature gun



PLIERS & TOOLS

Orthodontic pliers
Orthodontic tools



ORTHODONTIC OTHER

Pattern Resin
Ortho Resin
GNI's Pedo(Kids) Crown



AESTHETIC SERIES

Ceramic Self-Ligating Bracket

VENUS



► ACTIVE



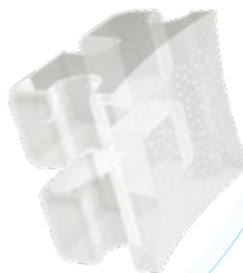
► PASSIVE

Prescription	ROTH		MBT	
Slot	018	022	018	022

- The Outstanding quality of the Polycrystalline body allows extra strength and increases the durability of the tie wings.
- Fully Active and Passive types allow for outstanding rotation and torque control while lessening the friction for each case.
- A rounded edge design helps with precise bracket placement and reduces the patient's discomfort.
- Unique base coating mechanics increase bonding durability and provide comfortable debonding.
- Convenient to attach by holding the indicator using bracket tweezers.

Sapphire Bracket

ROSA



- Pure Monocrystalline sapphire bracket features perfect transparency.
- Optimized body strength, including tie wings by a special heating system.
- Rounded edge, low profile design reduce the patient's discomfort.
- Unique base coating mechanics increase bonding durability and provide comfortable debonding.
- Exceptionally affordable.
- Convenient to attach by holding the indicator using bracket tweezers.

Prescription	EDGEWISE		ROTH		MBT	
Slot	018	022	018	022	018	022

AESTHETIC SERIES

Ceramic Bracket ROSE



- Polycrystalline Ceramic Bracket.
- Optimized body strength including tie wings with special heating system.
- Rounded Edge, low profile design reduces the patient's discomfort.
- Unique base coating mechanics increases bonding durability and provide comfortable debonding.

Prescription	EDGEWISE		ROTH		MBT	
Slot	018	022	018	022	018	022

Resin Bracket EVA



- Crystal-clear titanium strength plastic with outstanding features.
- Unique body coating mechanics provide a "No color change" appearance.
- Optimized torque control and less friction when inserting the customized metal slot.
- Exceptionally beneficial to all at the lowest price.

Prescription	EDGEWISE		ROTH		MBT	
Slot	018	022	018	022	018	022

METAL SERIES

Metal Self-Ligating Bracket

ZEUS



► ACTIVE



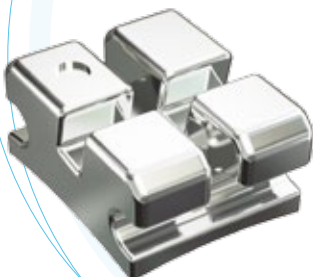
► PASSIVE

Prescription	ROTH		MBT	
Slot	018	022	018	022

- Fully Active and Passive types allow for outstanding rotation and torque control for each case.
- The Passive type enables lower friction sliding during treatment.
- Unique mesh type base with an exceptional stainless steel body allows for outstanding durability while processing.
- Mechanically made convenient design allows for reduced treatment time.
- Mesh base with Laser marking & Steel Powder Coating.

Metal Bracket

META



Prescription	EDGEWISE		ROTH		MBT	
Slot	018	022	018	022	018	022

- Achieves comfort that patients seek without sacrificing the precision and control.
- Extremely close tolerances which translates into strength, and proven performance.
- Accurate slot performed by Metal Injection Molding (MIM) machine.
- Rounded wing and hook increase patient comfort.
- Mesh base with Laser marking & Steel Powder Coating.

TUBES

BUCCAL TUBES

GNI Ortho buccal tube includes features, even in the smallest design details, which facilitate application.

The many sizes provide the operator with maximum treatment flexibility. The buccal tube that is easy to place and fit securely on first and second molars while providing outstanding patient comfort.

- Patient comfort is ensured with smooth rounded surfaces and friendly hooks
- Bondable and weldable are engineered to provide a complete and seamless appliance system
- Metal Injection Molded (MIM) stainless steel material for strength and proven performance
- The Extended Base provides maximum coverage for greater bond strength and control
- Provided various options for patient comfort
[Convertible & Non-convertible 1G(Round) & 4G(Square)]



BONDABLE BUCCAL TUBES

First Molar Bondable Buccal Tubes

Single Bondable Tubes **1G(Round)** [4pcs/set] [40pcs/set]

System	Roth	MBT	Edgewise	Item No.			
				Convertible		Non-convertible	
				18	22	18	22

Single Bondable Tubes **4G(Square)** [4pcs/set] [40pcs/set]

System	Roth	MBT	Edgewise	Item No.			
				Non-convertible			
				18		22	



BONDABLE BUCCAL TUBES

Second Molar Bondable Buccal Tubes

Single Bondable Tubes **1G(Round)** [4pcs/set] [40pcs/set]

System	Roth	MBT	Edgewise	Item No.			
				Non-convertible			
				18		22	

Single Bondable Tubes **4G(Square)** [4pcs/set] [40pcs/set]

System	Roth	MBT	Edgewise	Item No.			
				Non-convertible			
				18		22	



ARCHWIRES

Super Elastic NITI Archwire

Round	Size	Round	Size
Upper	0.012" / 0.31mm	Lower	0.012" / 0.31mm
	0.014" / 0.35mm		0.014" / 0.35mm
	0.016" / 0.41mm		0.016" / 0.41mm
	0.018" / 0.46mm		0.018" / 0.46mm
	0.020" / 0.51mm		0.020" / 0.51mm

Rectangular	Size	Rectangular	Size
Upper	0.016x0.016" / 0.41x0.41mm	Lower	0.016x0.016" / 0.41x0.41mm
	0.016x0.022" / 0.41x0.56mm		0.016x0.022" / 0.41x0.56mm
	0.017x0.022" / 0.43x0.56mm		0.017x0.022" / 0.43x0.56mm
	0.017x0.025" / 0.43x0.64mm		0.017x0.025" / 0.43x0.64mm
	0.018x0.022" / 0.46x0.56mm		0.018x0.022" / 0.46x0.56mm
	0.018x0.025" / 0.46x0.64mm		0.018x0.025" / 0.46x0.64mm
	0.019x0.025" / 0.48x0.64mm		0.019x0.025" / 0.48x0.64mm
	0.021x0.025" / 0.53x0.64mm		0.021x0.025" / 0.53x0.64mm

Thermal Active NITI Archwire

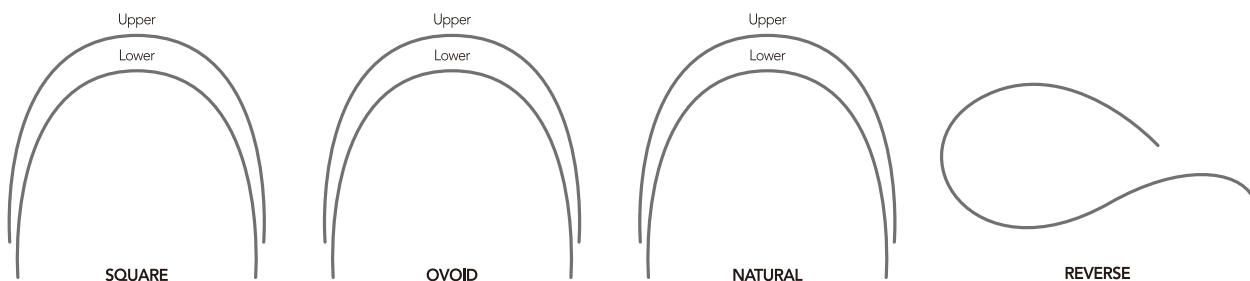
Round	Size	Round	Size
Upper	0.012" / 0.31mm	Lower	0.012" / 0.31mm
	0.014" / 0.35mm		0.014" / 0.35mm
	0.016" / 0.41mm		0.016" / 0.41mm
	0.018" / 0.46mm		0.018" / 0.46mm
	0.020" / 0.51mm		0.020" / 0.51mm

Rectangular	Size	Rectangular	Size
Upper	0.016x0.016" / 0.41x0.41mm	Lower	0.016x0.016" / 0.41x0.41mm
	0.016x0.022" / 0.41x0.56mm		0.016x0.022" / 0.41x0.56mm
	0.017x0.022" / 0.43x0.56mm		0.017x0.022" / 0.43x0.56mm
	0.017x0.025" / 0.43x0.64mm		0.017x0.025" / 0.43x0.64mm
	0.018x0.022" / 0.46x0.56mm		0.018x0.022" / 0.46x0.56mm
	0.018x0.025" / 0.46x0.64mm		0.018x0.025" / 0.46x0.64mm
	0.019x0.025" / 0.48x0.64mm		0.019x0.025" / 0.48x0.64mm
	0.021x0.025" / 0.53x0.64mm		0.021x0.025" / 0.53x0.64mm

Stainless Steel Archwire

Round	Size	Round	Size
Upper	0.012" / 0.31mm	Lower	0.012" / 0.31mm
	0.014" / 0.35mm		0.014" / 0.35mm
	0.016" / 0.41mm		0.016" / 0.41mm
	0.018" / 0.46mm		0.018" / 0.46mm
	0.020" / 0.51mm		0.020" / 0.51mm

Rectangular	Size	Rectangular	Size
Upper	0.016x0.016" / 0.41x0.41mm	Lower	0.016x0.016" / 0.41x0.41mm
	0.016x0.022" / 0.41x0.56mm		0.016x0.022" / 0.41x0.56mm
	0.017x0.022" / 0.43x0.56mm		0.017x0.022" / 0.43x0.56mm
	0.017x0.025" / 0.43x0.64mm		0.017x0.025" / 0.43x0.64mm
	0.018x0.022" / 0.46x0.56mm		0.018x0.022" / 0.46x0.56mm
	0.018x0.025" / 0.46x0.64mm		0.018x0.025" / 0.46x0.64mm
	0.019x0.025" / 0.48x0.64mm		0.019x0.025" / 0.48x0.64mm
	0.021x0.025" / 0.53x0.64mm		0.021x0.025" / 0.53x0.64mm



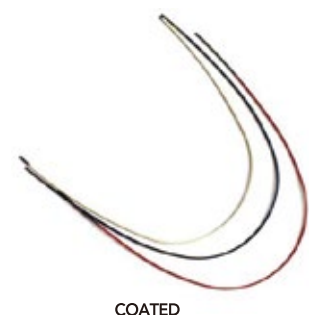
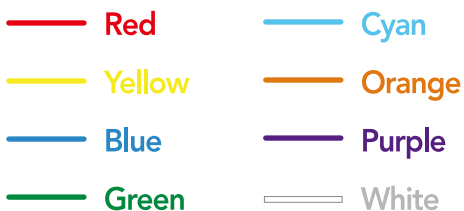
Reverse Curve NITI Archwire

Round	Size	Round	Size
Upper	0.012" / 0.31mm	Lower	0.012" / 0.31mm
	0.014" / 0.35mm		0.014" / 0.35mm
	0.016" / 0.41mm		0.016" / 0.41mm
	0.018" / 0.46mm		0.018" / 0.46mm
	0.020" / 0.51mm		0.020" / 0.51mm

Rectangular	Size	Rectangular	Size
Upper	0.016x0.016" / 0.41x0.41mm	Lower	0.016x0.016" / 0.41x0.41mm
	0.016x0.022" / 0.41x0.56mm		0.016x0.022" / 0.41x0.56mm
	0.017x0.022" / 0.43x0.56mm		0.017x0.022" / 0.43x0.56mm
	0.017x0.025" / 0.43x0.64mm		0.017x0.025" / 0.43x0.64mm
	0.018x0.022" / 0.46x0.56mm		0.018x0.022" / 0.46x0.56mm
	0.018x0.025" / 0.46x0.64mm		0.018x0.025" / 0.46x0.64mm
	0.019x0.025" / 0.48x0.64mm		0.019x0.025" / 0.48x0.64mm
	0.021x0.025" / 0.53x0.64mm		0.021x0.025" / 0.53x0.64mm

Coated Archwire

Available for Super Elastic, Thermal Active and Stainless Steel archwires



MINI SCREW



Stainless Steel (Standard)

- Rounded head reduces the patient's discomfort.
- Self drilling and tapping.
- Titanium & Stainless Steel are both available.
- Extra strength with a special heating system.
- Standard & Crosshead type both available.



IZ Screw

Titanium (Standard / Crosshead) / Stainless Steel (Standard / Crosshead)

Size / Diameter	Item No.		
	L 6mm	L 8mm	L 10mm
1.2mm	SA-1206 / SSA-1206	SA-1208 / SSA-1208	SA-1210 / SSA-1210
1.4mm	SA-1406 / SSA-1406	SA-1408 / SSA-1408	SA-1410 / SSA-1410
1.6mm	SA-1606 / SSA-1606	SA-1608 / SSA-1608	SA-1610 / SSA-1610
1.8mm	SA-1806 / SSA-1806	SA-1808 / SSA-1808	SA-1810 / SSA-1810
2.0mm	SA-2006 / SSA-2006	SA-2008 / SSA-2008	SA-2010 / SSA-2010

IZ Screw

Size / Diameter	Item No.					
	L 7mm	L 8mm	L 10mm	L 12mm	L 14mm	L 17mm
1.2mm	SSA-1207L	-	-	-	-	-
1.5mm	-	SSA-1508L	-	-	-	-
1.8mm	-	-	SSA-1810L	-	-	-
2.0mm	-	-	-	SSA-2012L	SSA-2014L	SSA-2017L
2.4mm	-	-	-	-	-	SSA-2417L