



# OPERA *Evolution*

Remote-controlled R/F  
system with digital flat  
panel detector



# ENGINEERING EXCELLENCE AND INNOVATORY DESIGN

Result of technological and ergonomic evolution, OPERA Evolution is designed to guarantee complete functionality and maximum image quality in different fields of application.





## VERSATILITY AND OPERATIONAL RELIABILITY

The remote-controlled table is available in many configurations in order to meet different operational needs while optimizing the cost-performance ratio.



MAXIMUM STRUCTURAL  
ERGONOMICS, QUICK AND  
SAFE EXAMINATIONS



- +/- 90° tilting movement
- **Wide SID**
- **Single or double grid**
- Latest generation **R/F panel detector**
- Ample **longitudinal translation** of the X-ray tube/detector group





# ROUTINE AND SPECIALIZED EXAMINATIONS

Operational efficiency and safety for the patient in every application: gastroenterology, skeletal apparatus, thorax and lungs, paediatrics, urology and gynecology, traumatology, linear tomography, digital angiography (DSA), stitching of the column and lower limbs, tomosynthesis.



OBLIQUE PROJECTIONS



EXAMINATIONS IN TRENDELENBURG POSITION



UROGENITAL EXAMINATIONS



PROJECTIONS ON STRETCHER



SPECIAL PROJECTIONS  
WITH WIRELESS DETECTOR



GASTROINTESTINAL EXAMINATIONS



WIDE RANGE OF ACCESSORIES

FUNCTIONALITY, TOTAL COMFORT  
FOR THE PATIENT







## HIGH SYSTEM INTEGRATION FOR THE UTMOST USER-FRIENDLINESS

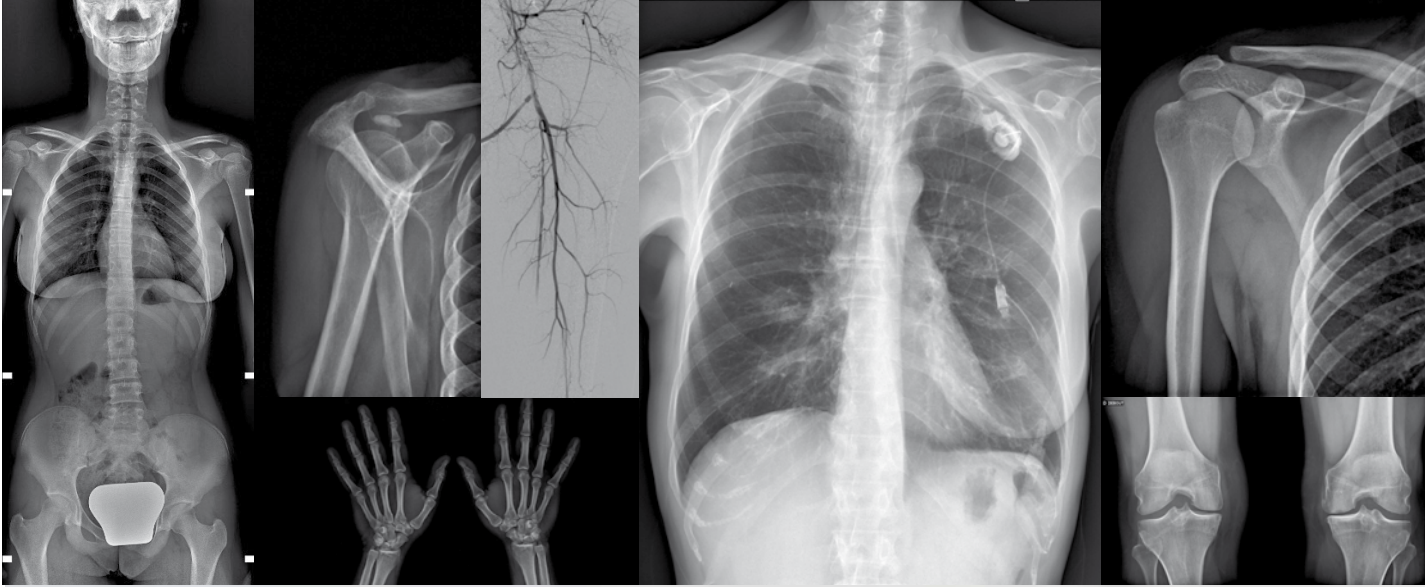
Thanks to the high frequency generators, the powerful imaging system and the intuitive control console, OPERA T ensures the maximum ease of use in every application.



## ADVANCED USER INTERFACE

The advanced user interface, characterized by extreme intuitiveness, allows the operator to manage efficiently the entire system.





## GET IN TOUCH

GENERAL MEDICAL MERATE SPA  
Via Partigiani, 25  
24068 SERIATE (BG) - Italy

Phone +39 035 45 25 311  
Fax +39 035 29 77 87  
info@gmmspa.com

[www.gmmspa.com](http://www.gmmspa.com)

